

## Product datasheet for **TA380526**

### PTPMT1 Rabbit Polyclonal Antibody

#### Product data:

Product Type:	Primary Antibodies
Applications:	WB
Recommended Dilution:	WB,1:500 - 1:2000
Reactivity:	Mouse
Modifications:	Unmodified
Host:	Rabbit
Isotype:	IgG
Clonality:	Polyclonal
Immunogen:	Recombinant fusion protein containing a sequence corresponding to amino acids 1-201 of human PTPMT1 (NP_783859.1).
Formulation:	Buffer: PBS with 0.02% sodium azide,50% glycerol,pH7.3.
Concentration:	lot specific
Purification:	Affinity purification
Conjugation:	Unconjugated
Storage:	Store at -20°C. Avoid freeze / thaw cycles.
Stability:	Shelf life: one year from despatch.
Predicted Protein Size:	15kDa/16kDa/22kDa
Gene Name:	protein tyrosine phosphatase, mitochondrial 1
Database Link:	<a href="#">Q8WUK0</a>



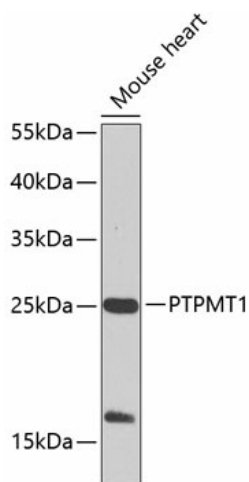
[View online »](#)

**Background:**

Lipid phosphatase which dephosphorylates phosphatidylglycerophosphate (PGP to phosphatidylglycerol (PG (By similarity. PGP is an essential intermediate in the biosynthetic pathway of cardiolipin, a mitochondrial-specific phospholipid regulating the membrane integrity and activities of the organelle (By similarity. Has also been shown to display phosphatase activity toward phosphoprotein substrates, specifically mediates dephosphorylation of mitochondrial proteins, thereby playing an essential role in ATP production (By similarity. Has probably a preference for proteins phosphorylated on Ser and/or Thr residues compared to proteins phosphorylated on Tyr residues (By similarity. Probably involved in regulation of insulin secretion in pancreatic beta cells (By similarity. May prevent intrinsic apoptosis, probably by regulating mitochondrial membrane integrity.

**Synonyms:**

DUSP23; FLJ46081; MOSP; PLIP; PNAS-129

**Product images:**

Western blot analysis of extracts of mouse heart, using PTPMT1 Antibody (TA380526) at 1:1000 dilution. | Secondary antibody: HRP Goat Anti-Rabbit IgG (H+L) at 1:10000 dilution. | Lysates/proteins: 25ug per lane. | Blocking buffer: 3% nonfat dry milk in TBST. | Detection: ECL Basic Kit . | Exposure time: 20s.