

## Product datasheet for **TA380506**

### PTGS1 Rabbit Polyclonal Antibody

#### Product data:

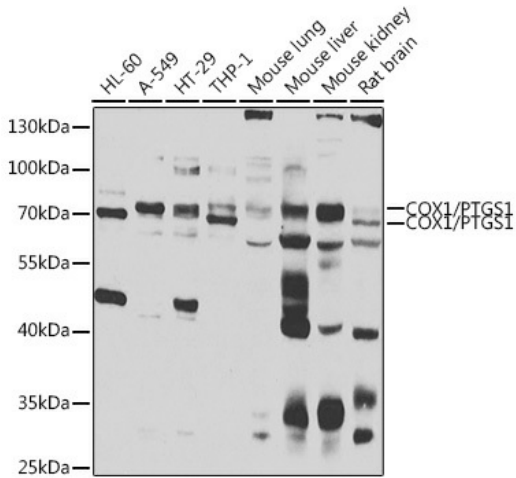
<b>Product Type:</b>	Primary Antibodies
<b>Applications:</b>	ICC/IF, IHC, WB
<b>Recommended Dilution:</b>	WB,1:500 - 1:2000 IHC,1:100 - 1:200 IF,1:50 - 1:200
<b>Reactivity:</b>	Human, Mouse, Rat
<b>Modifications:</b>	Unmodified
<b>Host:</b>	Rabbit
<b>Isotype:</b>	IgG
<b>Clonality:</b>	Polyclonal
<b>Immunogen:</b>	Recombinant fusion protein containing a sequence corresponding to amino acids 1-180 of human COX1/COX1/PTGS1 (NP_001258094.1).
<b>Formulation:</b>	Buffer: PBS with 0.02% sodium azide,50% glycerol,pH7.3.
<b>Concentration:</b>	lot specific
<b>Purification:</b>	Affinity purification
<b>Conjugation:</b>	Unconjugated
<b>Storage:</b>	Store at -20°C. Avoid freeze / thaw cycles.
<b>Stability:</b>	Shelf life: one year from despatch.
<b>Predicted Protein Size:</b>	56kDa/61kDa/64kDa/68kDa/71kDa/72kDa
<b>Gene Name:</b>	prostaglandin-endoperoxide synthase 1
<b>Database Link:</b>	<a href="#">Entrez Gene 5742 Human P23219</a>

**Background:** This is one of two genes encoding similar enzymes that catalyze the conversion of arachinodate to prostaglandin. The encoded protein regulates angiogenesis in endothelial cells, and is inhibited by nonsteroidal anti-inflammatory drugs such as aspirin. Based on its ability to function as both a cyclooxygenase and as a peroxidase, the encoded protein has been identified as a moonlighting protein. The protein may promote cell proliferation during tumor progression. Alternative splicing results in multiple transcript variants.

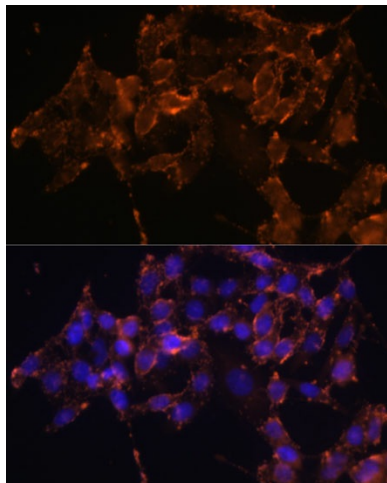

[View online »](#)

Synonyms: COX-1; COX1; COX3; Cyclooxygenase-1; PCOX1; PGG/HS; PGHS-1; PGHS1; PHS1; PTGHS

**Product images:**



Western blot analysis of extracts of various cell lines, using COX1/COX1/PTGS1 antibody (TA380506) at 1:1000 dilution. Secondary antibody: HRP Goat Anti-Rabbit IgG (H+L) at 1:10000 dilution. Lysates/proteins: 25ug per lane. Blocking buffer: 3% nonfat dry milk in TBST. Detection: ECL Enhanced Kit. Exposure time: 15s.



Immunofluorescence analysis of HeLa cells using COX1/COX1/PTGS1 Polyclonal Antibody (TA380506) at dilution of 1:100 (40x lens). Blue: DAPI for nuclear staining.