

Product datasheet for **TA380497**

EP1 (PTGER1) Rabbit Polyclonal Antibody

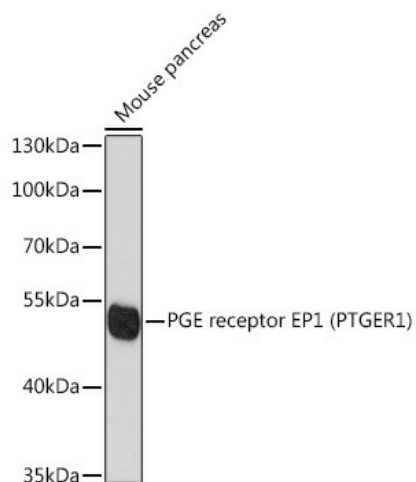
Product data:

Product Type:	Primary Antibodies
Applications:	WB
Recommended Dilution:	WB,1:500 - 1:2000
Reactivity:	Mouse
Modifications:	Unmodified
Host:	Rabbit
Isotype:	IgG
Clonality:	Polyclonal
Immunogen:	A synthetic peptide corresponding to a sequence within amino acids 300-400 of human PGE receptor EP1 (PGE receptor EP1 (PTGER1)) (NP_000946.2).
Formulation:	Buffer: PBS with 0.02% sodium azide,50% glycerol,pH7.3.
Concentration:	lot specific
Purification:	Affinity purification
Conjugation:	Unconjugated
Storage:	Store at -20°C. Avoid freeze / thaw cycles.
Stability:	Shelf life: one year from despatch.
Predicted Protein Size:	41kDa
Gene Name:	prostaglandin E receptor 1
Database Link:	P34995
Background:	The protein encoded by this gene is a member of the G protein-coupled receptor family. This protein is one of four receptors identified for prostaglandin E2 (PGE2). Through a phosphatidylinositol-calcium second messenger system, G-Q proteins mediate this receptor's activity. Knockout studies in mice suggested a role of this receptor in mediating algisia and in regulation of blood pressure. Studies in mice also suggested that this gene may mediate adrenocorticotrophic hormone response to bacterial endotoxin.
Synonyms:	EP1



[View online »](#)

Product images:



Western blot analysis of extracts of mouse pancreas, using PGE receptor EP1 (PGE receptor EP1 (PTGER1)) antibody (TA380497) at 1:1000 dilution. | Secondary antibody: HRP Goat Anti-Rabbit IgG (H+L) at 1:10000 dilution. | Lysates/proteins: 25ug per lane. | Blocking buffer: 3% nonfat dry milk in TBST. | Detection: ECL Enhanced Kit. | Exposure time: 90s.