

Product datasheet for **TA380484**

PTCH1 Rabbit Polyclonal Antibody

Product data:

Product Type:	Primary Antibodies
Applications:	ICC/IF, IHC, WB
Recommended Dilution:	WB,1:500 - 1:1000 IHC,1:50 - 1:100 IF,1:50 - 1:100
Reactivity:	Human, Mouse, Rat
Modifications:	Unmodified
Host:	Rabbit
Isotype:	IgG
Clonality:	Polyclonal
Immunogen:	Recombinant fusion protein containing a sequence corresponding to amino acids 1214-1312 of human PTCH1 (NP_000255.2).
Formulation:	Buffer: PBS with 0.02% sodium azide,50% glycerol,pH7.3.
Concentration:	lot specific
Purification:	Affinity purification
Conjugation:	Unconjugated
Storage:	Store at -20°C. Avoid freeze / thaw cycles.
Stability:	Shelf life: one year from despatch.
Predicted Protein Size:	144kDa/153kDa/160kDa/161kDa
Gene Name:	patched 1
Database Link:	Entrez Gene 5727 Human Q13635



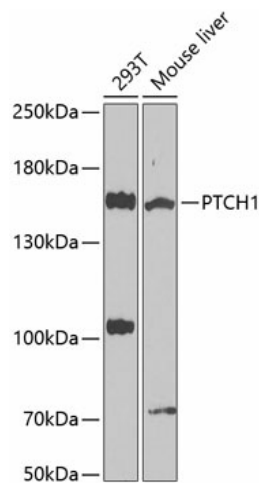
[View online »](#)

Background:

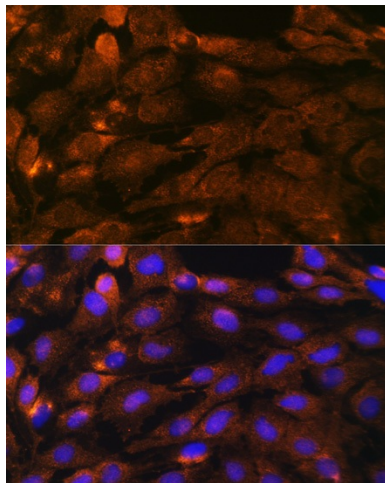
This gene encodes a member of the patched gene family. The encoded protein is the receptor for sonic hedgehog, a secreted molecule implicated in the formation of embryonic structures and in tumorigenesis, as well as the desert hedgehog and indian hedgehog proteins. This gene functions as a tumor suppressor. Mutations of this gene have been associated with basal cell nevus syndrome, esophageal squamous cell carcinoma, trichoepitheliomas, transitional cell carcinomas of the bladder, as well as holoprosencephaly. Alternative splicing results in multiple transcript variants encoding different isoforms. Additional splice variants have been described, but their full length sequences and biological validity cannot be determined currently.

Synonyms:

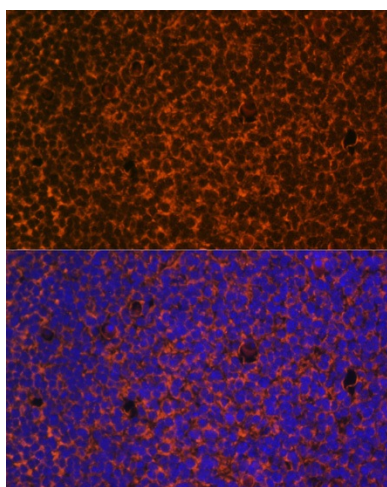
BCNS; FLJ26746; FLJ42602; HPE7; NBCCS; OTTHUMP00000021709; OTTHUMP00000021710; patched; PTC; PTC1; PTCH; PTCH11

Product images:


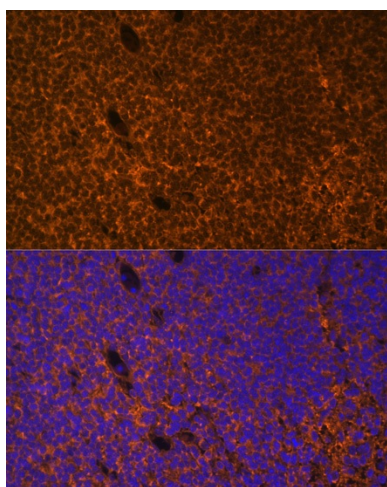
Western blot analysis of extracts of various cell lines, using PTCH1 antibody (TA380484) at 1:1000 dilution. | Secondary antibody: HRP Goat Anti-Rabbit IgG (H+L) at 1:10000 dilution. | Lysates/proteins: 25ug per lane. | Blocking buffer: 3% nonfat dry milk in TBST. | Detection: ECL Basic Kit . | Exposure time: 90s.



Immunofluorescence analysis of C6 cells using PTCH1 antibody (TA380484) at dilution of 1:100. Blue: DAPI for nuclear staining.



Immunofluorescence analysis of mouse embryos cells using PTCH1 antibody (TA380484) at dilution of 1:100. Blue: DAPI for nuclear staining.



Immunofluorescence analysis of mouse embryos cells using PTCH1 antibody (TA380484) at dilution of 1:100. Blue: DAPI for nuclear staining.