

## Product datasheet for **TA380483**

### PTCD3 Rabbit Polyclonal Antibody

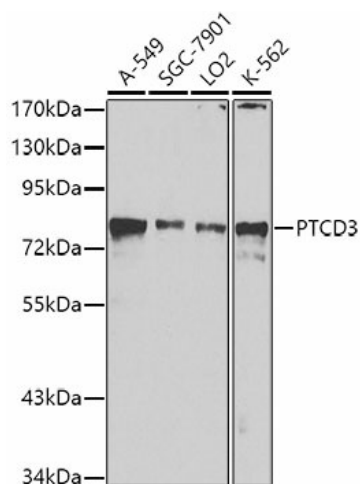
#### Product data:

Product Type:	Primary Antibodies
Applications:	ICC/IF, WB
Recommended Dilution:	WB,1:500 - 1:2000 IHC,1:50 - 1:200 IF,1:50 - 1:200
Reactivity:	Human, Mouse, Rat
Modifications:	Unmodified
Host:	Rabbit
Isotype:	IgG
Clonality:	Polyclonal
Immunogen:	Recombinant fusion protein containing a sequence corresponding to amino acids 450-689 of human PTCD3 (NP_060422.4).
Formulation:	Buffer: PBS with 0.02% sodium azide,50% glycerol,pH7.3.
Concentration:	lot specific
Purification:	Affinity purification
Conjugation:	Unconjugated
Storage:	Store at -20°C. Avoid freeze / thaw cycles.
Stability:	Shelf life: one year from despatch.
Predicted Protein Size:	31kDa/78kDa
Gene Name:	pentatricopeptide repeat domain 3
Database Link:	<a href="#">Entrez Gene 55037 Human Q96EY7</a>
Background:	Mitochondrial RNA-binding protein that has a role in mitochondrial translation.
Synonyms:	DKFZp666K071; FLJ20758; TRG-15

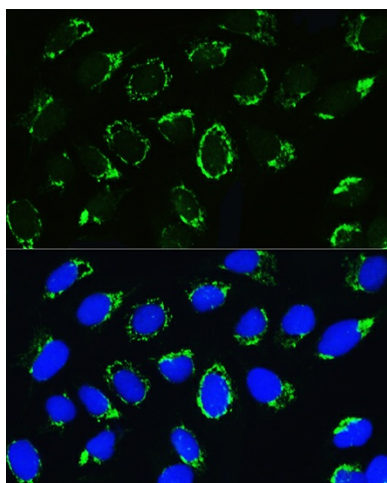


[View online »](#)

## Product images:



Western blot analysis of extracts of various cell lines, using PTCD3 antibody (TA380483) at 1:1000 dilution. | Secondary antibody: HRP Goat Anti-Rabbit IgG (H+L) at 1:10000 dilution. | Lysates/proteins: 25ug per lane. | Blocking buffer: 3% nonfat dry milk in TBST. | Detection: ECL Basic Kit. | Exposure time: 90s.



Immunofluorescence analysis of U2OS cells using PTCD3 Rabbit pAb (TA380483) at dilution of 1:100. Blue: DAPI for nuclear staining.