

Product datasheet for **TA380475**

PSORS1C1 Rabbit Polyclonal Antibody

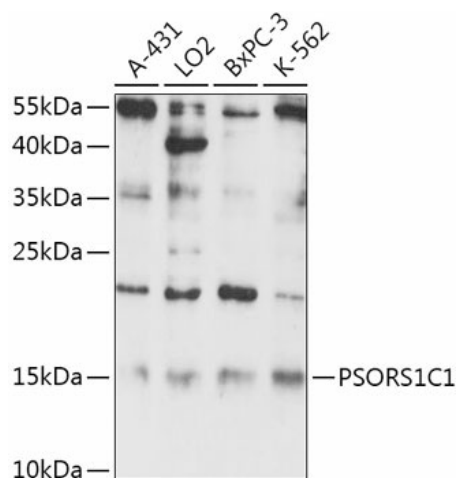
Product data:

Product Type:	Primary Antibodies
Applications:	WB
Recommended Dilution:	WB,1:500 - 1:2000
Reactivity:	Human
Modifications:	Unmodified
Host:	Rabbit
Isotype:	IgG
Clonality:	Polyclonal
Immunogen:	A synthetic peptide of Human PSORS1C1.
Formulation:	Buffer: PBS with 0.02% sodium azide,50% glycerol,pH7.3.
Concentration:	lot specific
Purification:	Affinity purification
Conjugation:	Unconjugated
Storage:	Store at -20°C. Avoid freeze / thaw cycles.
Stability:	Shelf life: one year from despatch.
Gene Name:	psoriasis susceptibility 1 candidate 1
Database Link:	Entrez Gene 170679 Human Q9UIG5
Background:	This gene is one of several genes thought to confer susceptibility to psoriasis and systemic sclerosis, located on chromosome 6 near the major histocompatibility complex (MHC) class I region. [provided by RefSeq, Sep 2011]
Synonyms:	C6orf16; MGC132530; SEEK1



[View online »](#)

Product images:



Western blot analysis of extracts of various cell lines, using PSORS1C1 antibody (TA380475) at 1:1000 dilution. | Secondary antibody: HRP Goat Anti-Rabbit IgG (H+L) at 1:10000 dilution. | Lysates/proteins: 25ug per lane. | Blocking buffer: 3% nonfat dry milk in TBST. | Detection: ECL Basic Kit. | Exposure time: 90s.