

## Product datasheet for **TA380473S**

### Proteasome Activator Subunit 4 (PSME4) Rabbit Polyclonal Antibody

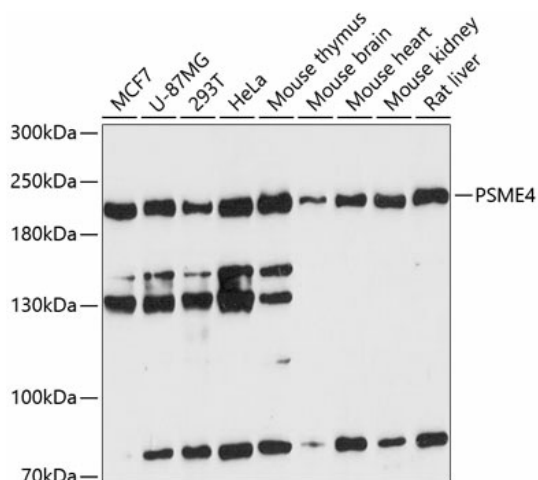
#### Product data:

Product Type:	Primary Antibodies
Applications:	ELISA, IHC, WB
Recommended Dilution:	WB, 1:500 - 1:2000 IHC-P, 1:50 - 1:200 ELISA, Recommended starting concentration is 1 µg/mL. Please optimize the concentration based on your specific assay requirements.
Reactivity:	Human, Mouse, Rat
Modifications:	Unmodified
Host:	Rabbit
Isotype:	IgG
Clonality:	Polyclonal
Formulation:	Buffer: PBS with 0.02% sodium azide, 50% glycerol, pH 7.3.
Concentration:	lot specific
Purification:	Affinity purification
Conjugation:	Unconjugated
Storage:	Store at -20°C. Avoid freeze / thaw cycles.
Stability:	Shelf life: one year from despatch.
Predicted Protein Size:	211kDa
Gene Name:	proteasome activator subunit 4
Database Link:	<a href="#">Entrez Gene 23198 Human Q14997</a>
Background:	Predicted to enable lysine-acetylated histone binding activity; peptidase activator activity; and proteasome binding activity. Predicted to be involved in DNA repair; proteasomal ubiquitin-independent protein catabolic process; and spermatogenesis, exchange of chromosomal proteins. Located in nucleoplasm.
Synonyms:	FLJ21864; KIAA0077; MGC138374; MGC142228; PA200



[View online »](#)

## Product images:



Western blot analysis of various lysates using PSME4 Rabbit pAb ([TA380473]) at 1:3000 dilution.

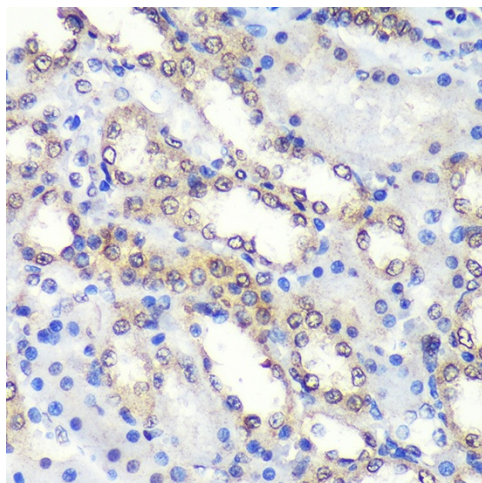
Secondary antibody: HRP-conjugated Goat anti-Rabbit IgG (H+L) (AS014) at 1:10000 dilution.

Lysates/proteins: 25µg per lane.

Blocking buffer: 3% nonfat dry milk in TBST.

Detection: ECL Enhanced Kit (RM00021).

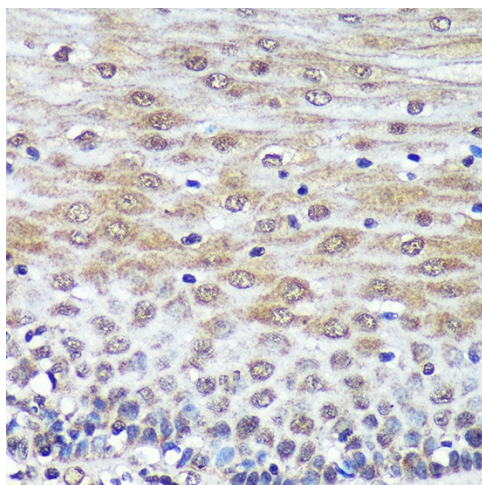
Exposure time: 90s.



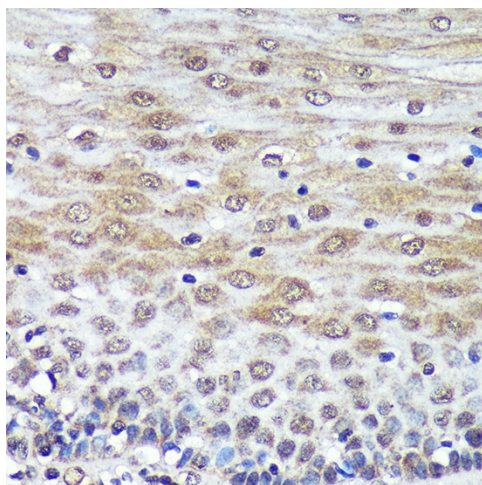
Immunohistochemistry analysis of paraffin-

embedded Mouse heart using PSME4 Rabbit pAb ([TA380473]) at dilution of 1:100 (40x lens).

Microwave antigen retrieval performed with 0.01M PBS Buffer (pH 7.2) prior to IHC staining.



Immunohistochemistry analysis of paraffin-embedded Rat kidney using PSME4 Rabbit pAb ([TA380473]) at dilution of 1:100 (40x lens). Microwave antigen retrieval performed with 0.01M PBS Buffer (pH 7.2) prior to IHC staining.



Immunohistochemistry analysis of paraffin-embedded Human esophageal using PSME4 Rabbit pAb ([TA380473]) at dilution of 1:100 (40x lens). Microwave antigen retrieval performed with 0.01M PBS Buffer (pH 7.2) prior to IHC staining.