

Product datasheet for **TA380450**

PSMA8 Rabbit Polyclonal Antibody

Product data:

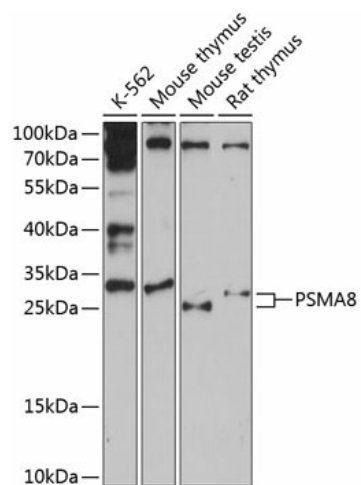
Product Type:	Primary Antibodies
Applications:	WB
Recommended Dilution:	WB,1:500 - 1:2000
Reactivity:	Human, Mouse, Rat
Modifications:	Unmodified
Host:	Rabbit
Isotype:	IgG
Clonality:	Polyclonal
Immunogen:	Recombinant fusion protein containing a sequence corresponding to amino acids 1-240 of human PSMA8 (NP_653263.2).
Formulation:	Buffer: PBS with 0.02% sodium azide,50% glycerol,pH7.3.
Concentration:	lot specific
Purification:	Affinity purification
Conjugation:	Unconjugated
Storage:	Store at -20°C. Avoid freeze / thaw cycles.
Stability:	Shelf life: one year from despatch.
Predicted Protein Size:	23kDa/27kDa/28kDa
Gene Name:	proteasome subunit alpha 8
Database Link:	Entrez Gene 143471 Human Q8TAA3
Background:	Component of the spermatoproteasome, a proteasome specifically found in testis that promotes acetylation-dependent degradation of histones, thereby participating actively to the exchange of histones during spermatogenesis. The proteasome is a protein complex that degrades unneeded or damaged proteins by proteolysis, a chemical reaction that breaks peptide bonds. Required for 20S core proteasome assembly, essential for the degradation of meiotic proteins RAD51 and RPA1 at late prophase I and the progression of meiosis I during spermatogenesis. Localizes to the synaptonemal complex, a 'zipper'-like structure that holds homologous chromosome pairs in synapsis during meiotic prophase I.



[View online »](#)

Synonyms: MGC26605; PSMA7L

Product images:



Western blot analysis of extracts of various cell lines, using PSMA8 antibody (TA380450) at 1:3000 dilution. | Secondary antibody: HRP Goat Anti-Rabbit IgG (H+L) at 1:10000 dilution. | Lysates/proteins: 25ug per lane. | Blocking buffer: 3% nonfat dry milk in TBST. | Detection: ECL Basic Kit . | Exposure time: 90s.