

Product datasheet for **TA380441S**

Pregnancy Specific Glycoprotein 1 (PSG1) Rabbit Polyclonal Antibody

Product data:

Product Type:	Primary Antibodies
Applications:	ICC/IF, IHC, WB
Recommended Dilution:	WB,1:500 - 1:2000 IHC,1:50 - 1:100 IF,1:50 - 1:200
Reactivity:	Human
Modifications:	Unmodified
Host:	Rabbit
Isotype:	IgG
Clonality:	Polyclonal
Immunogen:	Recombinant fusion protein containing a sequence corresponding to amino acids 180-419 of human PSG1 (NP_001171754.1).
Formulation:	Buffer: PBS with 0.02% sodium azide,50% glycerol,pH7.3.
Concentration:	lot specific
Purification:	Affinity purification
Conjugation:	Unconjugated
Storage:	Store at -20°C. Avoid freeze / thaw cycles.
Stability:	Shelf life: one year from despatch.
Predicted Protein Size:	46kDa/47kDa/48kDa
Gene Name:	pregnancy specific beta-1-glycoprotein 1
Database Link:	Entrez Gene 5669 Human P11464



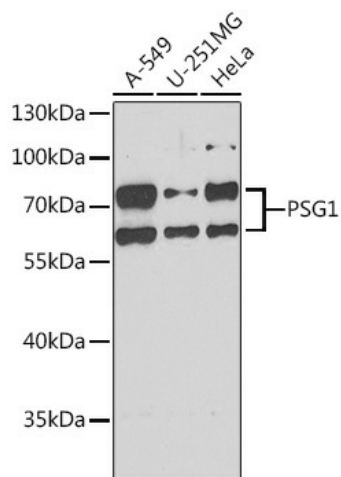
[View online »](#)

Background:

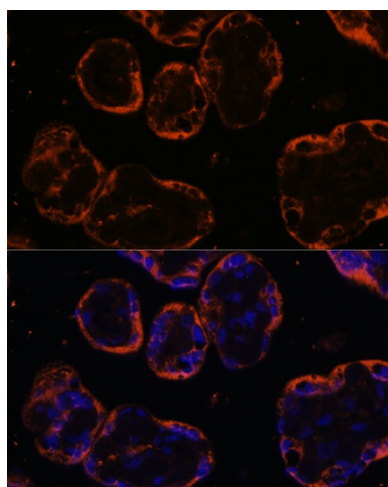
The human placenta is a multihormonal endocrine organ that produces hormones, enzymes, and other molecules that support fetal survival and development. Pregnancy-specific beta-1-glycoprotein (PSBG, PSG) is a major product of the syncytiotrophoblast, reaching concentrations of 100 to 290 mg/l at term in the serum of pregnant women (Horne et al., 1976 [PubMed 971765]). PSG is a member of the immunoglobulin (Ig) superfamily (Watanabe and Chou, 1988 [PubMed 3257488]; Streydio et al., 1988 [PubMed 3260773]). [supplied by OMIM, Oct 2009]

Synonyms:

B1G1; CD66f; DHFRP2; FL-NCA-1/2; FLJ90598; FLJ90654; PBG1; PS-beta-C/D; PSBG-1; PSBG1; PSG95; PSGGA; PSGIIA; SP1

Product images:


Western blot analysis of extracts of various cell lines, using PSG1 antibody ([TA380441]) at 1:1000 dilution. | Secondary antibody: HRP Goat Anti-Rabbit IgG (H+L) at 1:10000 dilution. | Lysates/proteins: 25ug per lane. | Blocking buffer: 3% nonfat dry milk in TBST. | Detection: ECL Basic Kit. | Exposure time: 90s.



Immunofluorescence analysis of human placenta cells using PSG1 antibody ([TA380441]) at dilution of 1:100. Blue: DAPI for nuclear staining.