

Product datasheet for **TA380428**

PRSS23 Rabbit Polyclonal Antibody

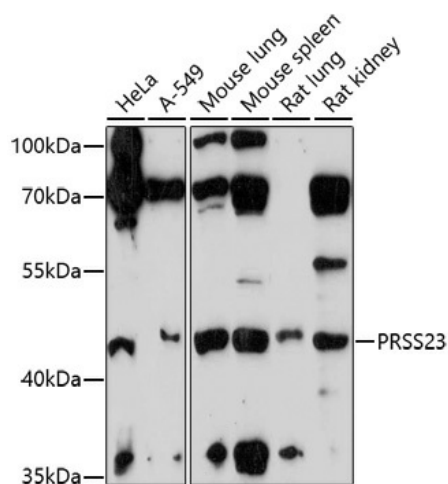
Product data:

Product Type:	Primary Antibodies
Applications:	IHC, WB
Recommended Dilution:	WB,1:500 - 1:2000 IHC,1:100 - 1:200
Reactivity:	Human, Mouse, Rat
Host:	Rabbit
Isotype:	IgG
Clonality:	Polyclonal
Immunogen:	Recombinant fusion protein containing a sequence corresponding to amino acids 101-220 of human PRSS23 (NP_009104.2).
Formulation:	Buffer: PBS with 0.02% sodium azide,50% glycerol,pH7.3.
Concentration:	lot specific
Purification:	Affinity purification
Conjugation:	Unconjugated
Storage:	Store at -20°C. Avoid freeze / thaw cycles.
Stability:	Shelf life: one year from despatch.
Gene Name:	protease, serine 23
Database Link:	Entrez Gene 11098 Human O95084
Background:	This gene encodes a conserved member of the trypsin family of serine proteases. Mouse studies found a decrease of mRNA levels of this gene after ovulation was induced. Alternative splicing results in multiple transcript variants.
Synonyms:	MGC5107; SIG13; SPUVE; ZSIG13



[View online »](#)

Product images:



Western blot analysis of extracts of various cell lines, using PRSS23 antibody (TA380428) at 1:1000 dilution. | Secondary antibody: HRP Goat Anti-Rabbit IgG (H+L) at 1:10000 dilution. | Lysates/proteins: 25ug per lane. | Blocking buffer: 3% nonfat dry milk in TBST. | Detection: ECL Enhanced Kit. | Exposure time: 90s.