

Product datasheet for TA380427S

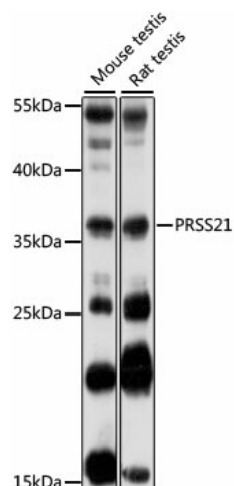
PRSS21 Rabbit Polyclonal Antibody

Product data:

Product Type:	Primary Antibodies
Applications:	ELISA, WB
Recommended Dilution:	WB, 1:500 - 1:2000 ELISA, Recommended starting concentration is 1 µg/mL. Please optimize the concentration based on your specific assay requirements.
Reactivity:	Mouse, Rat
Modifications:	Unmodified
Host:	Rabbit
Isotype:	IgG
Clonality:	Polyclonal
Formulation:	Buffer: PBS with 0.02% sodium azide, 50% glycerol, pH 7.3.
Concentration:	lot specific
Purification:	Affinity purification
Conjugation:	Unconjugated
Storage:	Store at -20°C. Avoid freeze / thaw cycles.
Stability:	Shelf life: one year from despatch.
Predicted Protein Size:	35kDa
Gene Name:	protease, serine 21
Database Link:	Q9Y6M0
Background:	This gene encodes a cell-surface anchored serine protease, which is a member of the trypsin family of serine proteases. The encoded protein is predicted to be active on peptide linkages involving the carboxyl group of lysine or arginine. The encoded protein localizes to the cytoplasm and the plasma membrane of premeiotic testicular germ cells and may be involved in progression of testicular tumors of germ cell origin. Alternatively spliced transcript variants encoding multiple isoforms have been observed for this gene.
Synonyms:	ESP-1; ESP1; TEST1; testisin


[View online »](#)

Product images:



Western blot analysis of various lysates using PRSS21 Rabbit pAb ([TA380427]) at 1:1000 dilution.

Secondary antibody: HRP-conjugated Goat anti-Rabbit IgG (H+L) (AS014) at 1:10000 dilution.

Lysates/proteins: 25µg per lane.

Blocking buffer: 3% nonfat dry milk in TBST.

Detection: ECL Basic Kit (RM00020).

Exposure time: 5s.