

Product datasheet for **TA380421**

PRRG2 Rabbit Polyclonal Antibody

Product data:

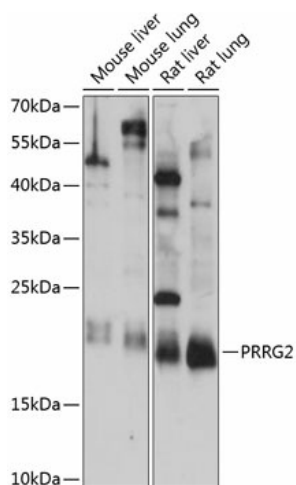
Product Type:	Primary Antibodies
Applications:	WB
Recommended Dilution:	WB,1:500 - 1:2000
Reactivity:	Human, Mouse, Rat
Modifications:	Unmodified
Host:	Rabbit
Isotype:	IgG
Clonality:	Polyclonal
Immunogen:	Recombinant fusion protein containing a sequence corresponding to amino acids 1-179 of human PRRG2 (NP_001303264.1).
Formulation:	Buffer: PBS with 0.02% sodium azide,50% glycerol,pH7.3.
Concentration:	lot specific
Purification:	Affinity purification
Conjugation:	Unconjugated
Storage:	Store at -20°C. Avoid freeze / thaw cycles.
Stability:	Shelf life: one year from despatch.
Predicted Protein Size:	22kDa
Gene Name:	proline rich and Gla domain 2
Database Link:	Entrez Gene 5639 Human O14669
Background:	The protein encoded by this gene is a single-pass transmembrane protein containing an N-terminal gamma-carboxyglutamic acid (Gla) domain and tandem Pro/Leu-Pro-Xaa-Tyr (PY) motifs at its C-terminal end. The Gla domain is exposed on the cell surface while the PY motifs are cytoplasmic. The PY motifs of the encoded protein have been shown to interact with YAP1, a WW domain-containing protein. Therefore, it is thought that the encoded protein may be part of a signal transduction pathway. Two transcript variants encoding different isoforms have been found for this gene.



[View online »](#)

Synonyms: PRGP2; TMG2

Product images:



Western blot analysis of extracts of various cell lines, using PRRG2 antibody (TA380421) at 1:1000 dilution. | Secondary antibody: HRP Goat Anti-Rabbit IgG (H+L) at 1:10000 dilution. | Lysates/proteins: 25ug per lane. | Blocking buffer: 3% nonfat dry milk in TBST. | Detection: ECL Basic Kit. | Exposure time: 15s.