

Product datasheet for TA380418S

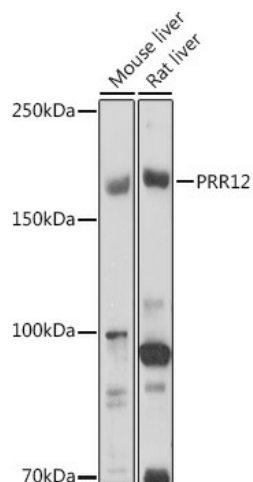
PRR12 Rabbit Polyclonal Antibody

Product data:

Product Type:	Primary Antibodies
Applications:	ELISA, WB
Recommended Dilution:	WB, 1:500 - 1:1000 ELISA, Recommended starting concentration is 1 µg/mL. Please optimize the concentration based on your specific assay requirements.
Reactivity:	Human, Mouse, Rat
Modifications:	Unmodified
Host:	Rabbit
Isotype:	IgG
Clonality:	Polyclonal
Formulation:	Buffer: PBS with 0.02% sodium azide, 50% glycerol, pH 7.3.
Concentration:	lot specific
Purification:	Affinity purification
Conjugation:	Unconjugated
Storage:	Store at -20°C. Avoid freeze / thaw cycles.
Stability:	Shelf life: one year from despatch.
Predicted Protein Size:	211kDa
Gene Name:	proline rich 12
Database Link:	Entrez Gene 57479 Human Q9ULL5
Background:	This gene encodes a proline-rich protein that contains two A-T hook DNA binding domains. A chromosomal translocation and gene fusion between this gene and zinc finger, MIZ-type containing 1 (Gene ID: 57178) may underlie intellectual disability and neuropsychiatric problems in a human patient. Enriched expression of this gene in embryonic mouse brain suggests that this gene may play a role in nervous system development.
Synonyms:	KIAA1205


[View online »](#)

Product images:



Western blot analysis of various lysates using PRR12 Rabbit pAb ([TA380418]) at 1:1000 dilution. Secondary antibody: HRP-conjugated Goat anti-Rabbit IgG (H+L) (AS014) at 1:10000 dilution. Lysates/proteins: 25µg per lane. Blocking buffer: 3% nonfat dry milk in TBST. Detection: ECL Basic Kit (RM00020). Exposure time: 180s.