

Product datasheet for **TA380418**

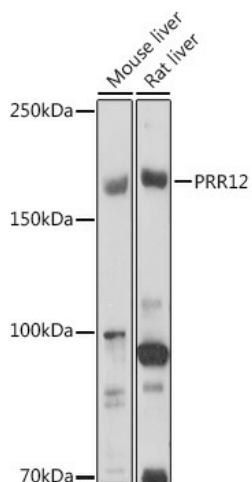
PRR12 Rabbit Polyclonal Antibody

Product data:

Product Type:	Primary Antibodies
Applications:	WB
Recommended Dilution:	WB,1:500 - 1:2000
Reactivity:	Human, Mouse, Rat
Modifications:	Unmodified
Host:	Rabbit
Isotype:	IgG
Clonality:	Polyclonal
Immunogen:	Recombinant protein of human PRR12.
Formulation:	Buffer: PBS with 0.02% sodium azide,50% glycerol,pH7.3.
Concentration:	lot specific
Purification:	Affinity purification
Conjugation:	Unconjugated
Storage:	Store at -20°C. Avoid freeze / thaw cycles.
Stability:	Shelf life: one year from despatch.
Predicted Protein Size:	211kDa
Gene Name:	proline rich 12
Database Link:	Entrez Gene 57479 Human Q9ULL5
Background:	This gene encodes a proline-rich protein that contains two A-T hook DNA binding domains. A chromosomal translocation and gene fusion between this gene and zinc finger, MIZ-type containing 1 (Gene ID: 57178) may underlie intellectual disability and neuropsychiatric problems in a human patient. Enriched expression of this gene in embryonic mouse brain suggests that this gene may play a role in nervous system development.
Synonyms:	KIAA1205



[View online »](#)

Product images:

Western blot analysis of extracts of various cell lines, using PRR12 antibody (TA380418) at 1:1000 dilution. | Secondary antibody: HRP Goat Anti-Rabbit IgG (H+L) at 1:10000 dilution. | Lysates/proteins: 25ug per lane. | Blocking buffer: 3% nonfat dry milk in TBST. | Detection: ECL Basic Kit . | Exposure time: 180s.