

Product datasheet for **TA380407S**

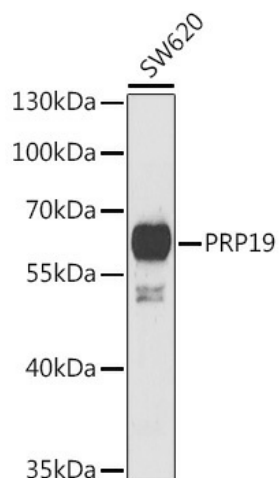
PRP19 (PRPF19) Rabbit Polyclonal Antibody

Product data:

Product Type:	Primary Antibodies
Applications:	ELISA, WB
Recommended Dilution:	WB, 1:500 - 1:2000 ELISA, Recommended starting concentration is 1 µg/mL. Please optimize the concentration based on your specific assay requirements.
Reactivity:	Human, Mouse, Rat
Modifications:	Unmodified
Host:	Rabbit
Isotype:	IgG
Clonality:	Polyclonal
Formulation:	Buffer: PBS with 0.02% sodium azide, 50% glycerol, pH 7.3.
Concentration:	lot specific
Purification:	Affinity purification
Conjugation:	Unconjugated
Storage:	Store at -20°C. Avoid freeze / thaw cycles.
Stability:	Shelf life: one year from despatch.
Predicted Protein Size:	55kDa
Gene Name:	pre-mRNA processing factor 19
Database Link:	Entrez Gene 27339 Human Q9UMS4
Background:	Enables identical protein binding activity and ubiquitin-ubiquitin ligase activity. Involved in several processes, including DNA damage checkpoint signaling; cellular protein metabolic process; and mRNA splicing, via spliceosome. Acts upstream of or within protein polyubiquitination. Located in cytoplasm; nuclear speck; and site of double-strand break. Part of Prp19 complex and U2-type catalytic step 2 spliceosome. Colocalizes with DNA replication factor A complex.
Synonyms:	hPSO4; NMP200; PRP19; PSO4; SNEV; UBOX4


[View online »](#)

Product images:



Western blot analysis of lysates from SW620 cells