

Product datasheet for **TA380407**

PRP19 (PRPF19) Rabbit Polyclonal Antibody

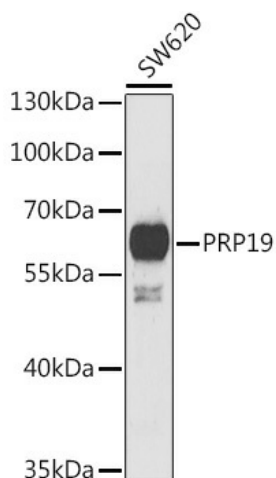
Product data:

| | |
|-------------------------|--|
| Product Type: | Primary Antibodies |
| Applications: | WB |
| Recommended Dilution: | WB 1:500 - 1:2000 |
| Reactivity: | Human, Mouse, Rat |
| Modifications: | Unmodified |
| Host: | Rabbit |
| Isotype: | IgG |
| Clonality: | Polyclonal |
| Immunogen: | Recombinant fusion protein containing a sequence corresponding to amino acids 1-220 of human PRP19 (NP_055317.1). |
| Formulation: | Buffer: PBS with 0.02% sodium azide, 50% glycerol, pH7.3. |
| Concentration: | lot specific |
| Purification: | Affinity purification |
| Conjugation: | Unconjugated |
| Storage: | Store at -20°C. Avoid freeze / thaw cycles. |
| Stability: | Shelf life: one year from despatch. |
| Predicted Protein Size: | 55kDa |
| Gene Name: | pre-mRNA processing factor 19 |
| Database Link: | Entrez Gene 27339 Human Q9UMS4 |
| Background: | PSO4 is the human homolog of yeast Pso4, a gene essential for cell survival and DNA repair (Beck et al., 2008 [PubMed 18263876]). [supplied by OMIM, Sep 2008] |
| Synonyms: | hPSO4; NMP200; PRP19; PSO4; SNEV; UBOX4 |



[View online »](#)

Product images:



Western blot analysis of extracts of SW620 cells, using PRP19 antibody (TA380407) at 1:1000 dilution. | Secondary antibody: HRP Goat Anti-Rabbit IgG (H+L) at 1:10000 dilution. | Lysates/proteins: 25ug per lane. | Blocking buffer: 3% nonfat dry milk in TBST. | Detection: ECL Basic Kit . | Exposure time: 90s.