

Product datasheet for **TA380399**

PROP1 Rabbit Polyclonal Antibody

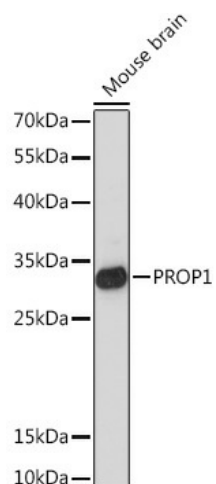
Product data:

Product Type:	Primary Antibodies
Applications:	WB
Recommended Dilution:	WB,1:500 - 1:2000
Reactivity:	Mouse
Host:	Rabbit
Isotype:	IgG
Clonality:	Polyclonal
Immunogen:	A synthetic peptide corresponding to a sequence within amino acids 50-150 of human PROP1 (NP_006252.3).
Formulation:	Buffer: PBS with 0.02% sodium azide,50% glycerol,pH7.3.
Concentration:	lot specific
Purification:	Affinity purification
Conjugation:	Unconjugated
Storage:	Store at -20°C. Avoid freeze / thaw cycles.
Stability:	Shelf life: one year from despatch.
Gene Name:	PROP paired-like homeobox 1
Database Link:	O75360
Background:	This gene encodes a paired-like homeodomain transcription factor in the developing pituitary gland. Expression occurs prior to and is required for expression of pou domain transcription factor 1, which is responsible for pituitary development and hormone expression. Mutations in this gene have been associated with combined pituitary hormone deficiency-2 as well as deficiencies in luteinizing hormone, follicle-stimulating hormone, growth hormone, prolactin, and thyroid-stimulating hormone.
Synonyms:	CPHD2; PROP-1



[View online »](#)

Product images:



Western blot analysis of extracts of Mouse brain, using PROP1 Rabbit pAb (TA380399) at 1:1000 dilution. | Secondary antibody: HRP Goat Anti-Rabbit IgG (H+L) at 1:10000 dilution. | Lysates/proteins: 25ug per lane. | Blocking buffer: 3% nonfat dry milk in TBST. | Detection: ECL Basic Kit . | Exposure time: 50s.