

## Product datasheet for **TA380381S**

### CGK2 (PRKG2) Rabbit Polyclonal Antibody

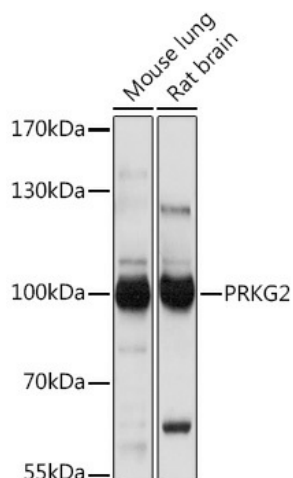
#### Product data:

Product Type:	Primary Antibodies
Applications:	ELISA, ICC/IF, IP, WB
Recommended Dilution:	WB, 1:500 - 1:2000 IF/ICC, 1:50 - 1:200 IP, 0.5µg-4µg antibody for 400µg-600µg extracts of whole cells ELISA, Recommended starting concentration is 1 µg/mL. Please optimize the concentration based on your specific assay requirements.
Reactivity:	Mouse, Rat
Host:	Rabbit
Isotype:	IgG
Clonality:	Polyclonal
Formulation:	Buffer: PBS with 0.02% sodium azide, 50% glycerol, pH7.3.
Concentration:	lot specific
Purification:	Affinity purification
Conjugation:	Unconjugated
Storage:	Store at -20°C. Avoid freeze / thaw cycles.
Stability:	Shelf life: one year from despatch.
Predicted Protein Size:	87kDa
Gene Name:	protein kinase, cGMP-dependent, type II
Database Link:	<a href="#">Q13237</a>
Background:	This gene encodes a protein that belongs to the serine/threonine protein kinase family of proteins. The encoded protein binds to and inhibits the activation of several receptor tyrosine kinases. The membrane-bound protein is a regulator of intestinal secretion, bone growth and renin secretion. Alternate splicing results in multiple transcript variants encoding distinct isoforms whose regulatory N-termini differ in length but whose C-terminal catalytic domains are identical.
Synonyms:	cGKII; OTTHUMP00000160807; PRKGR2



[View online »](#)

## Product images:



Western blot analysis of various lysates using PRKG2 Rabbit pAb ([TA380381]) at 1:1000 dilution.

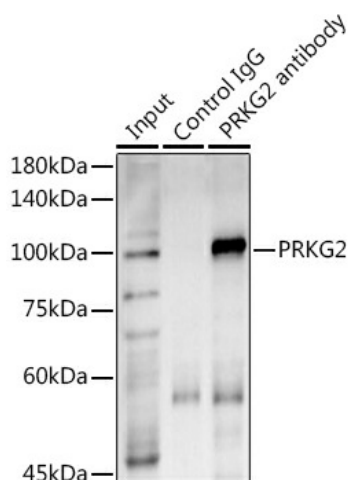
Secondary antibody: HRP-conjugated Goat anti-Rabbit IgG (H+L) (AS014) at 1:10000 dilution.

Lysates/proteins: 25µg per lane.

Blocking buffer: 3% nonfat dry milk in TBST.

Detection: ECL Basic Kit (RM00020).

Exposure time: 1s.



Immunoprecipitation analysis of 600 µg extracts of Mouse lung using 3 µg PRKG2 antibody ([TA380381]). Western blot was performed from the immunoprecipitate using PRKG2 antibody ([TA380381]) at a dilution of 1:1000.