

Product datasheet for **TA380379**

DNA PKcs (PRKDC) Rabbit Polyclonal Antibody

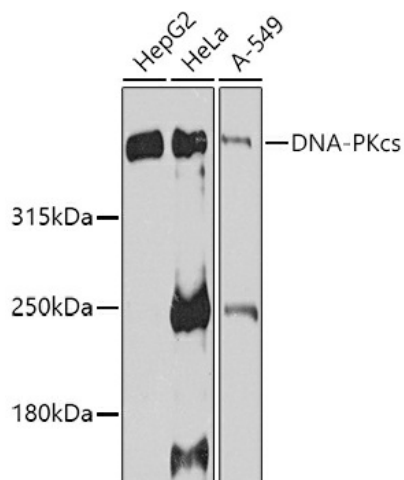
Product data:

Product Type:	Primary Antibodies
Applications:	ICC/IF, IHC, WB
Recommended Dilution:	WB,1:500 - 1:2000 IHC,1:50 - 1:200 IF,1:50 - 1:200
Reactivity:	Human, Mouse
Modifications:	Unmodified
Host:	Rabbit
Isotype:	IgG
Clonality:	Polyclonal
Immunogen:	A synthetic peptide of human DNA-PKcs
Formulation:	Buffer: PBS with 0.02% sodium azide,50% glycerol,pH7.3.
Concentration:	lot specific
Purification:	Affinity purification
Conjugation:	Unconjugated
Storage:	Store at -20°C. Avoid freeze / thaw cycles.
Stability:	Shelf life: one year from despatch.
Predicted Protein Size:	465kDa/469kDa
Gene Name:	protein kinase, DNA-activated, catalytic polypeptide
Database Link:	Entrez Gene 5591 Human P78527
Background:	This gene encodes the catalytic subunit of the DNA-dependent protein kinase (DNA-PK). It functions with the Ku70/Ku80 heterodimer protein in DNA double strand break repair and recombination. The protein encoded is a member of the PI3/PI4-kinase family.
Synonyms:	DNA-PKcs; DNAPK; DNPK1; HYRC; HYRC1; p350; p460; XRCC7

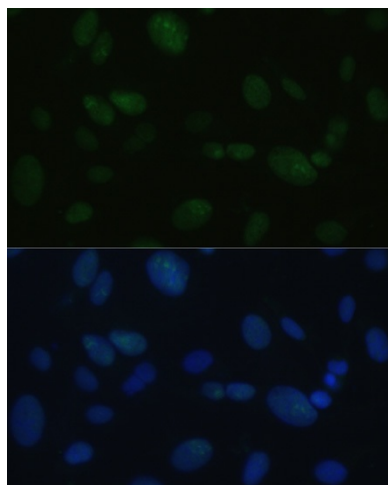


[View online »](#)

Product images:



Western blot analysis of extracts of various cell lines, using DNA-PKcs antibody (TA380379) at 1:1000 dilution. | Secondary antibody: HRP Goat Anti-Rabbit IgG (H+L) at 1:10000 dilution. | Lysates/proteins: 25ug per lane. | Blocking buffer: 3% nonfat dry milk in TBST. | Detection: ECL Basic Kit . | Exposure time: 90s.



Immunofluorescence analysis of U-2OS cells using DNA-PKcs antibody (TA380379) at dilution of 1:100. Blue: DAPI for nuclear staining.