

Product datasheet for **TA380374S**

PKC mu (PRKD1) Rabbit Polyclonal Antibody

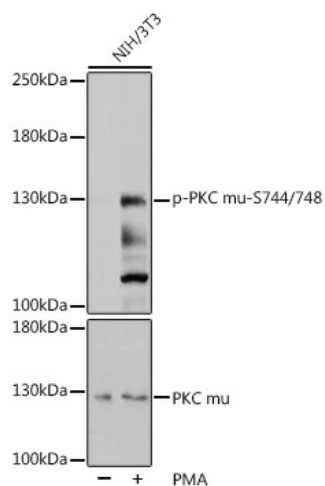
Product data:

| | |
|-------------------------|---|
| Product Type: | Primary Antibodies |
| Applications: | WB |
| Recommended Dilution: | WB,1:500 - 1:2000 |
| Reactivity: | Human, Mouse, Rat |
| Modifications: | Phospho S744/748 |
| Host: | Rabbit |
| Isotype: | IgG |
| Clonality: | Polyclonal |
| Immunogen: | A phospho specific peptide corresponding to residues surrounding S744/748 of human PKC mu |
| Formulation: | Buffer: PBS with 0.02% sodium azide,50% glycerol,pH7.3. |
| Concentration: | lot specific |
| Purification: | Affinity purification |
| Conjugation: | Unconjugated |
| Storage: | Store at -20°C. Avoid freeze / thaw cycles. |
| Stability: | Shelf life: one year from despatch. |
| Predicted Protein Size: | 101kDa |
| Gene Name: | protein kinase D1 |
| Database Link: | Entrez Gene 5587 Human Q15139 |
| Background: | The protein encoded by this gene is a serine/threonine protein kinase involved in many cellular processes, including Golgi body membrane integrity and transport, cell migration and differentiation, MAPK8/JNK1 and Ras pathway signaling, MAPK1/3 (ERK1/2) pathway signaling, cell survival, and regulation of cell shape and adhesion. |
| Synonyms: | nPKC-D1; nPKC-mu; PKC-mu; PKCM; PKD; PKD1; PRKCM |



[View online »](#)

Product images:



Western blot analysis of extracts of NIH/3T3 cells, using Phospho-PKC mu-S744/748 pAb ([TA380374]) at 1:1000 dilution or PRKD1 antibody (A16185). NIH/3T3 cells were treated by PMA/TPA (200nM) for 30 minutes after serum-starvation overnight. | Secondary antibody: HRP Goat Anti-Rabbit IgG (H+L) at 1:10000 dilution. | Lysates/proteins: 25ug per lane. | Blocking buffer: 3% BSA. | Detection: ECL Basic Kit. | Exposure time: 5s.