

Product datasheet for **TA380374**

PKC mu (PRKD1) Rabbit Polyclonal Antibody

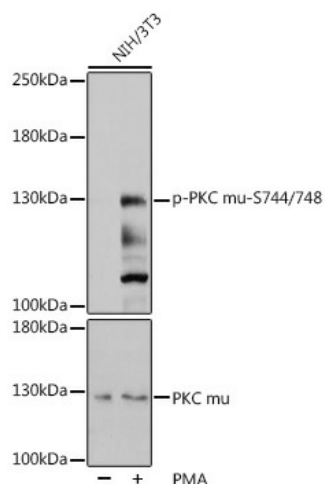
Product data:

Product Type:	Primary Antibodies
Applications:	WB
Recommended Dilution:	WB,1:500 - 1:2000
Reactivity:	Human, Mouse, Rat
Modifications:	Phospho S744/748
Host:	Rabbit
Isotype:	IgG
Clonality:	Polyclonal
Immunogen:	A phospho specific peptide corresponding to residues surrounding S744/748 of human PKC mu
Formulation:	Buffer: PBS with 0.02% sodium azide,50% glycerol,pH7.3.
Concentration:	lot specific
Purification:	Affinity purification
Conjugation:	Unconjugated
Storage:	Store at -20°C. Avoid freeze / thaw cycles.
Stability:	Shelf life: one year from despatch.
Predicted Protein Size:	101kDa
Gene Name:	protein kinase D1
Database Link:	Entrez Gene 5587 Human Q15139
Background:	The protein encoded by this gene is a serine/threonine protein kinase involved in many cellular processes, including Golgi body membrane integrity and transport, cell migration and differentiation, MAPK8/JNK1 and Ras pathway signaling, MAPK1/3 (ERK1/2) pathway signaling, cell survival, and regulation of cell shape and adhesion.
Synonyms:	nPKC-D1; nPKC-mu; PKC-mu; PKCM; PKD; PKD1; PRKCM



[View online »](#)

Product images:



Western blot analysis of extracts of NIH/3T3 cells, using Phospho-PKC mu-S744/748 pAb (TA380374) at 1:1000 dilution or PRKD1 antibody (A16185). NIH/3T3 cells were treated by PMA/TPA (200nM) for 30 minutes after serum-starvation overnight. | Secondary antibody: HRP Goat Anti-Rabbit IgG (H+L) at 1:10000 dilution. | Lysates/proteins: 25ug per lane. | Blocking buffer: 3% BSA. | Detection: ECL Basic Kit. | Exposure time: 5s.