

## Product datasheet for **TA380332S**

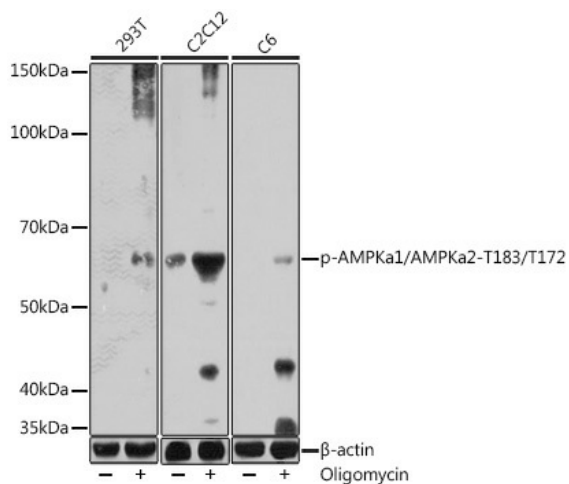
### AMPK alpha 1 (PRKAA1) Rabbit Polyclonal Antibody

#### Product data:

Product Type:	Primary Antibodies
Applications:	ELISA, WB
Recommended Dilution:	WB, 1:500 - 1:2000 ELISA, Recommended starting concentration is 1 µg/mL. Please optimize the concentration based on your specific assay requirements.
Reactivity:	Human, Mouse, Rat
Host:	Rabbit
Isotype:	IgG
Clonality:	Polyclonal
Formulation:	Buffer: PBS with 0.02% sodium azide, 50% glycerol, pH 7.3.
Concentration:	lot specific
Purification:	Affinity purification
Conjugation:	Unconjugated
Storage:	Store at -20°C. Avoid freeze / thaw cycles.
Stability:	Shelf life: one year from despatch.
Predicted Protein Size:	64kDa/65kDa/62kDa
Gene Name:	protein kinase AMP-activated catalytic subunit alpha 1
Database Link:	<a href="#">Entrez Gene 5562 Human Q13131</a>
Background:	The protein encoded by this gene belongs to the ser/thr protein kinase family. It is the catalytic subunit of the 5'-prime-AMP-activated protein kinase (AMPK). AMPK is a cellular energy sensor conserved in all eukaryotic cells. The kinase activity of AMPK is activated by the stimuli that increase the cellular AMP/ATP ratio. AMPK regulates the activities of a number of key metabolic enzymes through phosphorylation. It protects cells from stresses that cause ATP depletion by switching off ATP-consuming biosynthetic pathways. Alternatively spliced transcript variants encoding distinct isoforms have been observed.
Synonyms:	AMPK; AMPK1; AMPKa1; MGC33776; MGC57364

[View online »](#)

## Product images:



Western blot analysis of various lysates using Phospho-AMPK $\alpha$ 1/AMPK $\alpha$ 2-T183/T172 Rabbit pAb (TA380332) at 1:1000 dilution. 293T cells were treated by oligomycin (0.5  $\mu$ M) at 37°C for 30 minutes. C2C12 cells were treated by oligomycin (0.5  $\mu$ M) at 37°C for 30 minutes. C6 cells were treated by oligomycin (0.5  $\mu$ M) at 37°C for 30 minutes after serum-starvation overnight. Secondary antibody: HRP-conjugated Goat anti-Rabbit IgG (H+L) (AS014) at 1:10000 dilution. Lysates/proteins: 25 $\mu$ g per lane. Blocking buffer: 3% BSA. Detection: ECL Enhanced Kit (RM00021). Exposure time: 60s.