

## Product datasheet for TA380316S

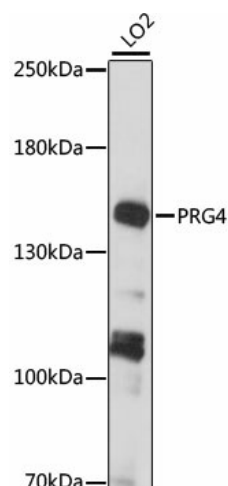
### Lubricin (PRG4) Rabbit Polyclonal Antibody

#### Product data:

Product Type:	Primary Antibodies
Applications:	ELISA, WB
Recommended Dilution:	WB, 1:200 - 1:2000 ELISA, Recommended starting concentration is 1 µg/mL. Please optimize the concentration based on your specific assay requirements.
Reactivity:	Human, Rat
Modifications:	Unmodified
Host:	Rabbit
Isotype:	IgG
Clonality:	Polyclonal
Formulation:	Buffer: PBS with 0.02% sodium azide, 50% glycerol, pH 7.3.
Concentration:	lot specific
Purification:	Affinity purification
Conjugation:	Unconjugated
Storage:	Store at -20°C. Avoid freeze / thaw cycles.
Stability:	Shelf life: one year from despatch.
Predicted Protein Size:	151kDa
Gene Name:	proteoglycan 4
Database Link:	<a href="#">Entrez Gene 10216 Human Q92954</a>
Background:	The protein encoded by this gene is a large proteoglycan that is synthesized by chondrocytes located at the surface of articular cartilage and by some synovial lining cells. This protein contains both chondroitin sulfate and keratan sulfate glycosaminoglycans. It functions as a boundary lubricant at the cartilage surface and contributes to the elastic absorption and energy dissipation of synovial fluid. Mutations in this gene result in camptodactyly-arthritis-coxa vara-pericarditis syndrome. Alternative splicing results in multiple transcript variants.
Synonyms:	bG174L6.2; CACP; FLJ32635; HAPO; JCAP; lubricin; MSF; OTTHUMP00000033580; SZP


[View online »](#)

## Product images:



Western blot analysis of lysates from LO2 cells