

## Product datasheet for **TA380313**

### PREPL Rabbit Polyclonal Antibody

#### Product data:

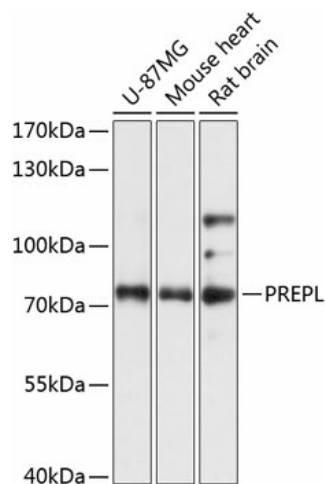
Product Type:	Primary Antibodies
Applications:	ICC/IF, WB
Recommended Dilution:	WB,1:500 - 1:2000 IF,1:50 - 1:100
Reactivity:	Human, Mouse, Rat
Modifications:	Unmodified
Host:	Rabbit
Isotype:	IgG
Clonality:	Polyclonal
Immunogen:	Recombinant fusion protein containing a sequence corresponding to amino acids 578-727 of human PREPL (NP_006027.2).
Formulation:	Buffer: PBS with 0.02% sodium azide,50% glycerol,pH7.3.
Concentration:	lot specific
Purification:	Affinity purification
Conjugation:	Unconjugated
Storage:	Store at -20°C. Avoid freeze / thaw cycles.
Stability:	Shelf life: one year from despatch.
Predicted Protein Size:	73kDa/76kDa/83kDa
Gene Name:	prolyl endopeptidase-like
Database Link:	<a href="#">Entrez Gene 9581 Human Q4J6C6</a>
Background:	The protein encoded by this gene belongs to the prolyl oligopeptidase subfamily of serine peptidases. Mutations in this gene have been associated with hypotonia-cystinuria syndrome, also known as the 2p21 deletion syndrome. Several alternatively spliced transcript variants encoding either the same or different isoforms have been described for this gene.



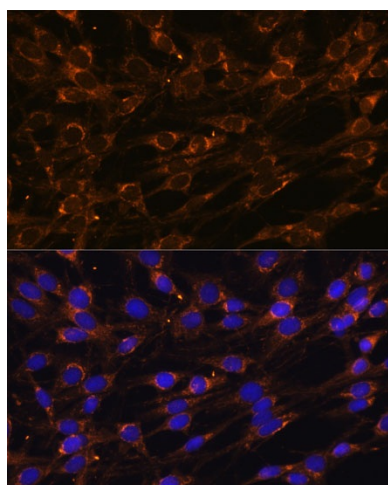
[View online »](#)

**Synonyms:** FLJ16627; KIAA0436; OTTHUMP00000202420; OTTHUMP00000202421; OTTHUMP00000202424; OTTHUMP00000202425; OTTHUMP00000202426; Prolylendopeptidase-like

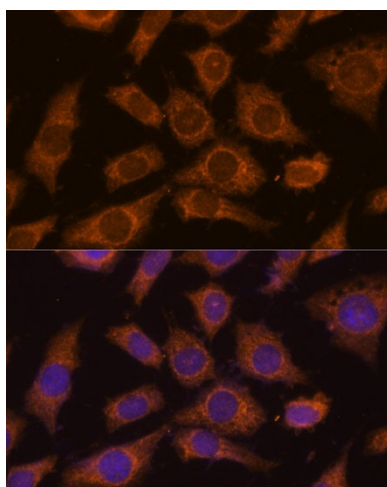
**Product images:**



Western blot analysis of extracts of various cell lines, using PREPL antibody (TA380313) at 1:3000 dilution. | Secondary antibody: HRP Goat Anti-Rabbit IgG (H+L) at 1:10000 dilution. | Lysates/proteins: 25ug per lane. | Blocking buffer: 3% nonfat dry milk in TBST. | Detection: ECL Basic Kit . | Exposure time: 10s.



Immunofluorescence analysis of C6 cells using PREPL Polyclonal Antibody (TA380313) at dilution of 1:100 (40x lens). Blue: DAPI for nuclear staining.



Immunofluorescence analysis of L929 cells using PREPL Polyclonal Antibody (TA380313) at dilution of 1:100 (40x lens). Blue: DAPI for nuclear staining.