

## Product datasheet for **TA380294S**

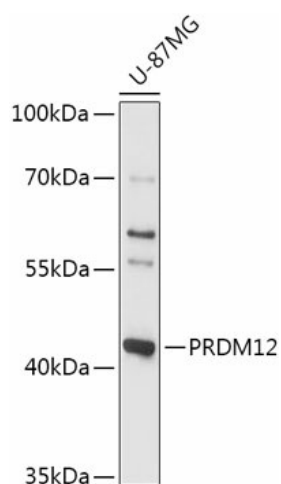
### PRDM12 Rabbit Polyclonal Antibody

#### Product data:

Product Type:	Primary Antibodies
Applications:	ELISA, WB
Recommended Dilution:	WB, 1:500 - 1:2000 ELISA, Recommended starting concentration is 1 µg/mL. Please optimize the concentration based on your specific assay requirements.
Reactivity:	Human, Mouse
Modifications:	Unmodified
Host:	Rabbit
Isotype:	IgG
Clonality:	Polyclonal
Formulation:	Buffer: PBS with 0.02% sodium azide, 50% glycerol, pH 7.3.
Concentration:	lot specific
Purification:	Affinity purification
Conjugation:	Unconjugated
Storage:	Store at -20°C. Avoid freeze / thaw cycles.
Stability:	Shelf life: one year from despatch.
Predicted Protein Size:	40kDa
Gene Name:	PR domain 12
Database Link:	<a href="#">Entrez Gene 59335 Human Q9H4Q4</a>
Background:	This gene encodes a transcriptional regulator of sensory neuronal specification that plays a critical role in pain perception. The encoded protein contains an N-terminal PRDI-BF1 and RIZ homology (PR) domain, a SET domain, and three C-terminal C2H2 zinc finger DNA-binding domains. Naturally occurring mutations in this gene are associated with congenital insensitivity to pain (CIP), and hereditary sensory and autonomic neuropathies (HSAN's) affecting peripheral sensory and autonomic neurons. Deregulation of this gene is associated with solid cancers and hematological malignancies including chronic myeloid leukaemia.
Synonyms:	PFM9


[View online »](#)

## Product images:



Western blot analysis of lysates from U-87MG cells