

Product datasheet for **TA380286**

PRAP1 Rabbit Polyclonal Antibody

Product data:

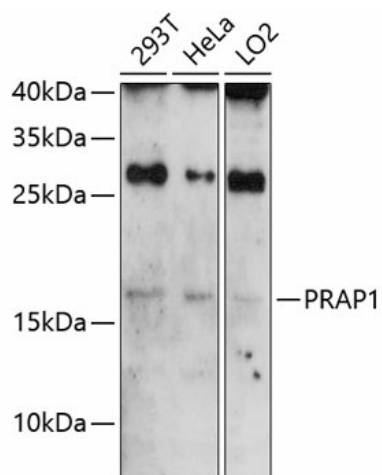
Product Type:	Primary Antibodies
Applications:	WB
Recommended Dilution:	WB,1:500 - 1:2000
Reactivity:	Human
Modifications:	Unmodified
Host:	Rabbit
Isotype:	IgG
Clonality:	Polyclonal
Immunogen:	Recombinant fusion protein containing a sequence corresponding to amino acids 1-151 of human PRAP1 (NP_660203.3).
Formulation:	Buffer: PBS with 0.02% sodium azide,50% glycerol,pH7.3.
Concentration:	lot specific
Purification:	Affinity purification
Conjugation:	Unconjugated
Storage:	Store at -20°C. Avoid freeze / thaw cycles.
Stability:	Shelf life: one year from despatch.
Predicted Protein Size:	10kDa/16kDa/17kDa
Gene Name:	proline-rich acidic protein 1
Database Link:	Entrez Gene 118471 Human Q96NZ9
Background:	Lipid-binding protein which promotes lipid absorption by facilitating MTTP-mediated lipid transfer (mainly triglycerides and phospholipids and MTTP-mediated apoB lipoprotein assembly and secretion (By similarity. Protects the gastrointestinal epithelium from irradiation-induced apoptosis (By similarity. May play an important role in maintaining normal growth homeostasis in epithelial cells. Involved in p53/TP53-dependent cell survival after DNA damage. May downregulate the expression of MAD1L1 and exert a suppressive role in mitotic spindle assembly checkpoint in hepatocellular carcinomas.



[View online »](#)

Synonyms: MGC126792; PRO1195; RP11-122K13.6; UPA

Product images:



Western blot analysis of extracts of various cell lines, using PRAP1 antibody (TA380286) at 1:3000 dilution. | Secondary antibody: HRP Goat Anti-Rabbit IgG (H+L) at 1:10000 dilution. | Lysates/proteins: 25ug per lane. | Blocking buffer: 3% nonfat dry milk in TBST. | Detection: ECL Enhanced Kit. | Exposure time: 90s.