

## Product datasheet for **TA380284S**

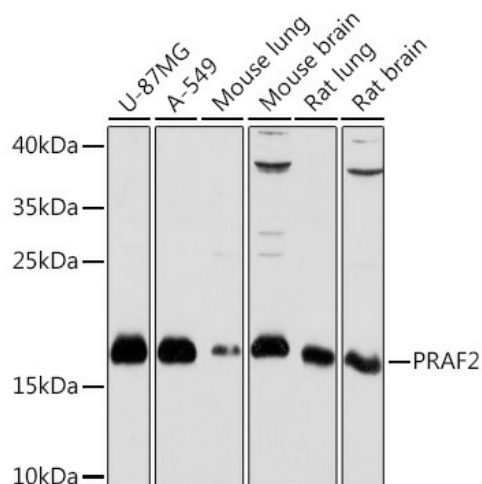
### JM4 (PRAF2) Rabbit Polyclonal Antibody

#### Product data:

Product Type:	Primary Antibodies
Applications:	ELISA, WB
Recommended Dilution:	WB, 1:500 - 1:2000 ELISA, Recommended starting concentration is 1 µg/mL. Please optimize the concentration based on your specific assay requirements.
Reactivity:	Human, Mouse, Rat
Host:	Rabbit
Isotype:	IgG
Clonality:	Polyclonal
Formulation:	Buffer: PBS with 0.02% sodium azide, 50% glycerol, pH 7.3.
Concentration:	lot specific
Purification:	Affinity purification
Conjugation:	Unconjugated
Storage:	Store at -20°C. Avoid freeze / thaw cycles.
Stability:	Shelf life: one year from despatch.
Predicted Protein Size:	19kDa
Gene Name:	PRA1 domain family member 2
Database Link:	<a href="#">Entrez Gene 11230 Human O60831</a>
Background:	Predicted to be involved in L-glutamate transmembrane transport. Predicted to be located in endosome membrane. Predicted to be integral component of membrane. Predicted to be active in membrane.
Synonyms:	JM4



[View online »](#)

**Product images:**

Western blot analysis of various lysates using PRAF2 Rabbit pAb (TA380284) at 1:1000 dilution. Secondary antibody: HRP-conjugated Goat anti-Rabbit IgG (H+L) (AS014) at 1:10000 dilution. Lysates/proteins: 25µg per lane. Blocking buffer: 3% nonfat dry milk in TBST. Detection: ECL Basic Kit (RM00020). Exposure time: 30s.