

Product datasheet for **TA380278**

SAPS3 (PPP6R3) Rabbit Polyclonal Antibody

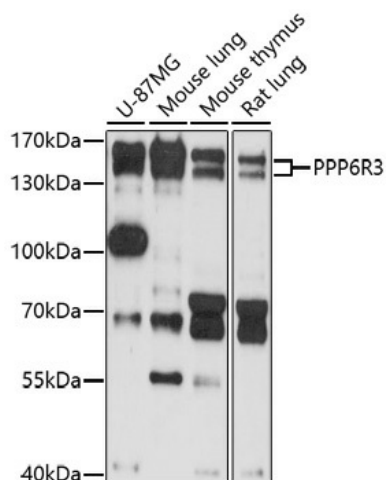
Product data:

Product Type:	Primary Antibodies
Applications:	WB
Recommended Dilution:	WB,1:500 - 1:2000
Reactivity:	Human, Mouse, Rat
Host:	Rabbit
Isotype:	IgG
Clonality:	Polyclonal
Immunogen:	Recombinant fusion protein containing a sequence corresponding to amino acids 1-260 of human PPP6R3 (NP_060782.2).
Formulation:	Buffer: PBS with 0.02% sodium azide,50% glycerol,pH7.3.
Concentration:	lot specific
Purification:	Affinity purification
Conjugation:	Unconjugated
Storage:	Store at -20°C. Avoid freeze / thaw cycles.
Stability:	Shelf life: one year from despatch.
Predicted Protein Size:	88kDa/94kDa/96kDa/97kDa/98kDa
Gene Name:	protein phosphatase 6 regulatory subunit 3
Database Link:	Entrez Gene 55291 Human Q5H9R7
Background:	Protein phosphatase regulatory subunits, such as SAPS3, modulate the activity of protein phosphatase catalytic subunits by restricting substrate specificity, recruiting substrates, and determining the intracellular localization of the holoenzyme. SAPS3 is a regulatory subunit for the protein phosphatase-6 catalytic subunit (PPP6C; MIM 612725) (Stefansson and Brautigan, 2006 [PubMed 16769727]).
Synonyms:	4930528G08Rik; 9130026N02Rik; D19Bwg1430e; D19ErtD703e; mKIAA1558; Pp6r3; Ppcs3; Pptcs3; Sap1; Saps3



[View online »](#)

Product images:



Western blot analysis of extracts of various cell lines, using PPP6R3 antibody (TA380278) at 1:1000 dilution. | Secondary antibody: HRP Goat Anti-Rabbit IgG (H+L) at 1:10000 dilution. | Lysates/proteins: 25ug per lane. | Blocking buffer: 3% nonfat dry milk in TBST. | Detection: ECL Basic Kit. | Exposure time: 90s.