

Product datasheet for **TA380271S**

PPP3R2 Rabbit Polyclonal Antibody

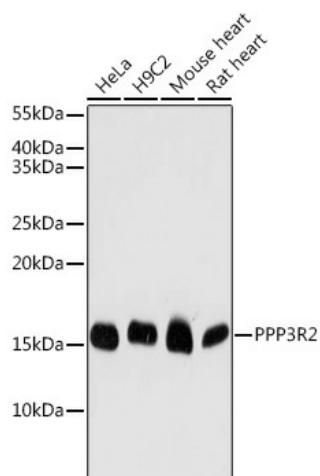
Product data:

Product Type:	Primary Antibodies
Applications:	ELISA, WB
Recommended Dilution:	WB, 1:500 - 1:2000 ELISA, Recommended starting concentration is 1 µg/mL. Please optimize the concentration based on your specific assay requirements.
Reactivity:	Human, Mouse, Rat
Modifications:	Unmodified
Host:	Rabbit
Isotype:	IgG
Clonality:	Polyclonal
Formulation:	Buffer: PBS with 0.02% sodium azide, 50% glycerol, pH 7.3.
Concentration:	lot specific
Purification:	Affinity purification
Conjugation:	Unconjugated
Storage:	Store at -20°C. Avoid freeze / thaw cycles.
Stability:	Shelf life: one year from despatch.
Predicted Protein Size:	20kDa
Gene Name:	protein phosphatase 3 regulatory subunit B, beta
Database Link:	Entrez Gene 5535 Human Q96LZ3
Background:	Predicted to enable calcium ion binding activity and calcium-dependent protein serine/threonine phosphatase regulator activity. Predicted to be involved in regulation of catalytic activity. Predicted to act upstream of or within penetration of zona pellucida. Predicted to be located in sperm mitochondrial sheath. Predicted to be part of calcineurin complex.
Synonyms:	CBLP; CBLP-like; CNBII; PPP3RL



[View online »](#)

Product images:



Western blot analysis of various lysates using PPP3R2 Rabbit pAb (TA380271S) at 1:1000 dilution.

Secondary antibody: HRP-conjugated Goat anti-Rabbit IgG (H+L) (AS014) at 1:10000 dilution.

Lysates/proteins: 25µg per lane.

Blocking buffer: 3% nonfat dry milk in TBST.

Detection: ECL Basic Kit (RM00020).

Exposure time: 180s.