

Product datasheet for **TA380266S**

PPP2R5D Rabbit Polyclonal Antibody

Product data:

Product Type:	Primary Antibodies
Applications:	ICC/IF, IHC, WB
Recommended Dilution:	WB,1:500 - 1:2000 IHC,1:100 - 1:200 IF,1:50 - 1:200
Reactivity:	Human, Mouse, Rat
Modifications:	Unmodified
Host:	Rabbit
Isotype:	IgG
Clonality:	Polyclonal
Immunogen:	A synthetic peptide corresponding to a sequence within amino acids 450-550 of human PP2A-B56δ/PR61δ/PP2A-B56δ/PR61δ/PPP2R5D (NP_006236.1).
Formulation:	Buffer: PBS with 0.02% sodium azide,50% glycerol,pH7.3.
Concentration:	lot specific
Purification:	Affinity purification
Conjugation:	Unconjugated
Storage:	Store at -20°C. Avoid freeze / thaw cycles.
Stability:	Shelf life: one year from despatch.
Predicted Protein Size:	58kDa/66kDa/69kDa
Gene Name:	protein phosphatase 2 regulatory subunit B'delta
Database Link:	Entrez Gene 5528 Human Q14738



[View online »](#)

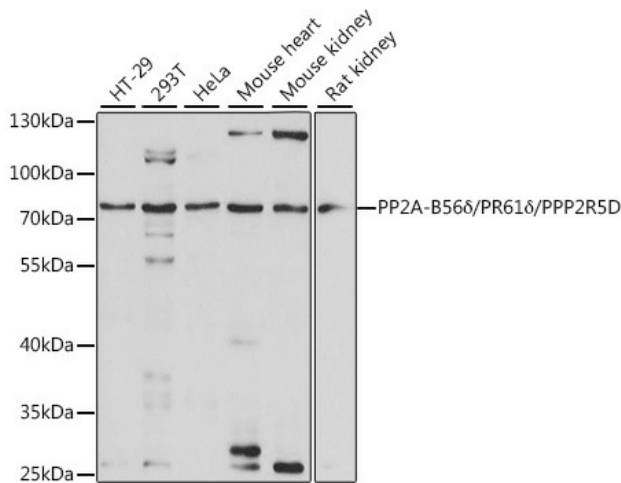
Background:

The product of this gene belongs to the phosphatase 2A regulatory subunit B family. Protein phosphatase 2A is one of the four major Ser/Thr phosphatases, and it is implicated in the negative control of cell growth and division. It consists of a common heteromeric core enzyme, which is composed of a catalytic subunit and a constant regulatory subunit, that associates with a variety of regulatory subunits. The B regulatory subunit might modulate substrate selectivity and catalytic activity. This gene encodes a delta isoform of the regulatory subunit B56 subfamily. Alternatively spliced transcript variants encoding different isoforms have been identified.

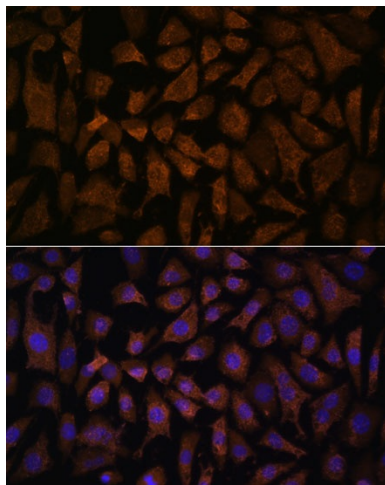
Synonyms:

B56D; MGC2134; MGC8949

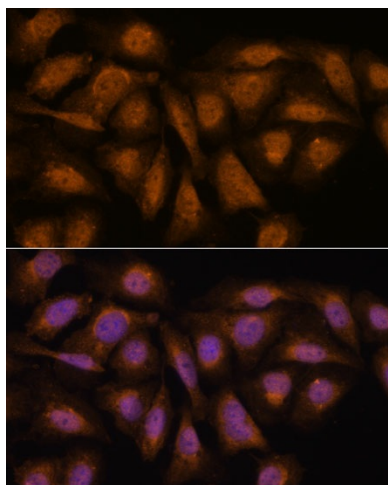
Product images:



Western blot analysis of extracts of various cell lines, using PP2A-B56δ/PR61δ/PP2A-B56δ/PR61δ/PPP2R5D antibody ([TA380266]) at 1:1000 dilution. |Secondary antibody: HRP Goat Anti-Rabbit IgG (H+L) at 1:10000 dilution. |Lysates/proteins: 25ug per lane. |Blocking buffer: 3% nonfat dry milk in TBST. |Detection: ECL Basic Kit . |Exposure time: 90s.



Immunofluorescence analysis of L929 cells using PP2A-B56δ/PR61δ/PP2A-B56δ/PR61δ/PPP2R5D antibody ([TA380266]) at dilution of 1:100. Blue: DAPI for nuclear staining.



Immunofluorescence analysis of U-2 OS cells using PP2A-B56 δ /PR61 δ /PP2A-B56 δ /PR61 δ /PPP2R5D antibody ([TA380266]) at dilution of 1:100. Blue: DAPI for nuclear staining.