

Product datasheet for **TA380260S**

PPP2R2B Rabbit Polyclonal Antibody

Product data:

Product Type:	Primary Antibodies
Applications:	WB
Recommended Dilution:	WB,1:500 - 1:2000
Reactivity:	Human, Mouse, Rat
Host:	Rabbit
Isotype:	IgG
Clonality:	Polyclonal
Immunogen:	Recombinant protein of human PPP2R2B/PPP2R2C.
Formulation:	Buffer: PBS with 0.02% sodium azide,50% glycerol,pH7.3.
Concentration:	lot specific
Purification:	Affinity purification
Conjugation:	Unconjugated
Storage:	Store at -20°C. Avoid freeze / thaw cycles.
Stability:	Shelf life: one year from despatch.
Gene Name:	protein phosphatase 2 regulatory subunit Bbeta
Database Link:	Entrez Gene 5521 Human Q00005

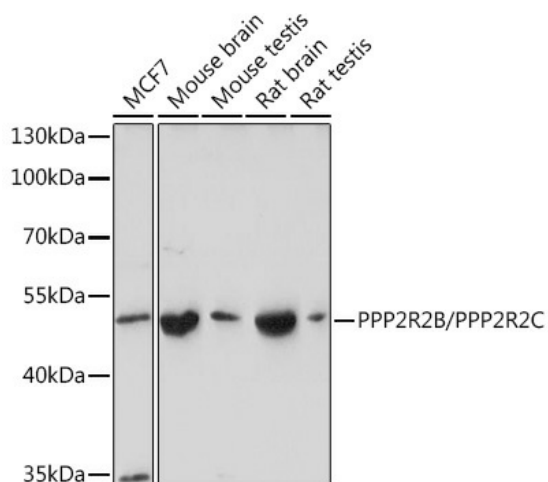
Background: Protein phosphatase 3 is one of the four major Ser/Thr phosphatases, and it is implicated in the negative control of cell growth and division. It consists of a common heteromeric core enzyme, which is composed of a catalytic subunit and a constant regulatory subunit, that associates with a variety of regulatory subunits. The constant regulatory subunit A serves as a scaffolding molecule to coordinate the assembly of the catalytic subunit and a variable regulatory B subunit. The B regulatory subunit might modulate substrate selectivity and catalytic activity.

Synonyms: B55-BETA; FLJ95686; MGC24888; PP2A-B55BETA; PP2A-PR55B; PP2AB-BETA; PP2APR55-BETA; PR2AB-BETA; PR2AB55-BETA; PR2APR55-BETA; PR52B; PR55-BETA; SCA12



[View online »](#)

Product images:



Western blot analysis of extracts of various cell lines, using PPP2R2B/PPP2R2C Rabbit pAb ([TA380260]) at 1:1000 dilution. | Secondary antibody: HRP Goat Anti-Rabbit IgG (H+L) at 1:10000 dilution. | Lysates/proteins: 25ug per lane. | Blocking buffer: 3% nonfat dry milk in TBST. | Detection: ECL Basic Kit . | Exposure time: 5s.