

Product datasheet for **TA380259**

PPP2R2B Rabbit Polyclonal Antibody

Product data:

Product Type:	Primary Antibodies
Applications:	WB
Recommended Dilution:	WB,1:1000 - 1:2000
Reactivity:	Human, Mouse, Rat
Modifications:	Unmodified
Host:	Rabbit
Isotype:	IgG
Clonality:	Polyclonal
Immunogen:	Recombinant fusion protein containing a sequence corresponding to amino acids 160-260 of human PP2A-B55 β /PR55 β /PP2A-B55 β /PR55 β /PPP2R2B (NP_858060.2).
Formulation:	Buffer: PBS with 0.02% sodium azide,50% glycerol,pH7.3.
Concentration:	lot specific
Purification:	Affinity purification
Conjugation:	Unconjugated
Storage:	Store at -20°C. Avoid freeze / thaw cycles.
Stability:	Shelf life: one year from despatch.
Predicted Protein Size:	50kDa/51kDa/52kDa/58kDa/62kDa
Gene Name:	protein phosphatase 2 regulatory subunit Bbeta
Database Link:	Entrez Gene 5521 Human Q00005



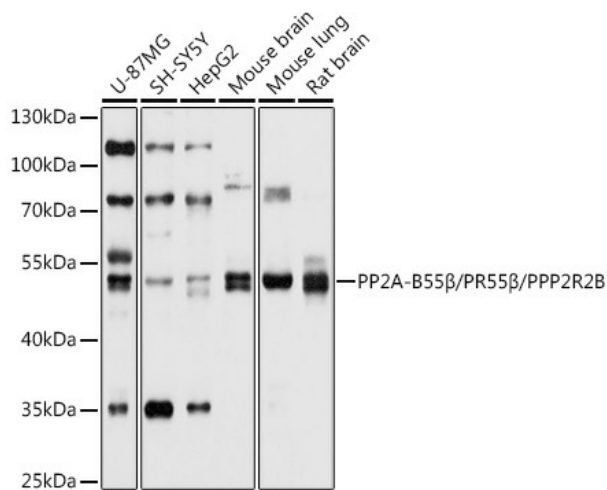
[View online »](#)

Background:

The product of this gene belongs to the phosphatase 2 regulatory subunit B family. Protein phosphatase 2 is one of the four major Ser/Thr phosphatases, and it is implicated in the negative control of cell growth and division. It consists of a common heteromeric core enzyme, which is composed of a catalytic subunit and a constant regulatory subunit, that associates with a variety of regulatory subunits. The B regulatory subunit might modulate substrate selectivity and catalytic activity. This gene encodes a beta isoform of the regulatory subunit B55 subfamily. Defects in this gene cause autosomal dominant spinocerebellar ataxia 12 (SCA12), a disease caused by degeneration of the cerebellum, sometimes involving the brainstem and spinal cord, and in resulting in poor coordination of speech and body movements. Multiple alternatively spliced variants, which encode different isoforms, have been identified for this gene. The 5' UTR of some of these variants includes a CAG trinucleotide repeat sequence (7-28 copies) that can be expanded to 55-78 copies in cases of SCA12.

Synonyms:

B55-BETA; FLJ95686; MGC24888; PP2A-B55BETA; PP2A-PR55B; PP2AB-BETA; PP2APR55-BETA; PR2AB-BETA; PR2AB55-BETA; PR2APR55-BETA; PR52B; PR55-BETA; SCA12

Product images:

Western blot analysis of extracts of various cell lines, using PP2A-B55β/PR55β/PP2A-B55β/PR55β/PPP2R2B antibody (TA380259) at 1:1000 dilution. | Secondary antibody: HRP Goat Anti-Rabbit IgG (H+L) at 1:10000 dilution. | Lysates/proteins: 25ug per lane. | Blocking buffer: 3% nonfat dry milk in TBST. | Detection: ECL Basic Kit . | Exposure time: 5s.