

## Product datasheet for **TA380256**

### PPP2R1A Rabbit Polyclonal Antibody

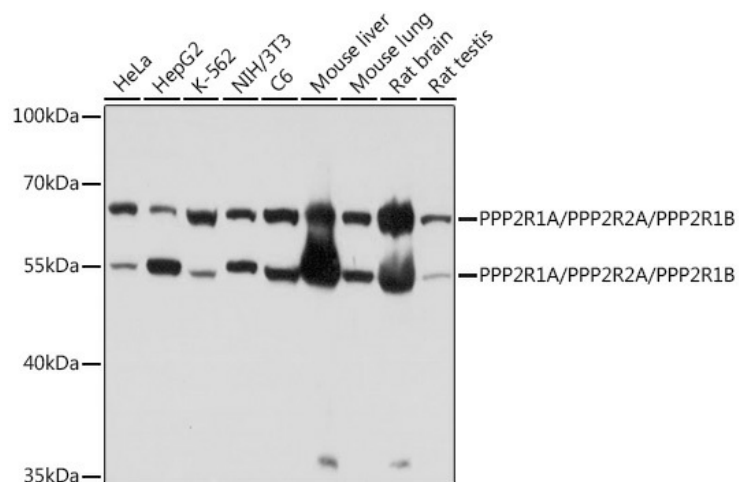
#### Product data:

|                       |                                                                                                                                                                                                                                                                                                                                                                                                                                                                                                                                                                                      |
|-----------------------|--------------------------------------------------------------------------------------------------------------------------------------------------------------------------------------------------------------------------------------------------------------------------------------------------------------------------------------------------------------------------------------------------------------------------------------------------------------------------------------------------------------------------------------------------------------------------------------|
| Product Type:         | Primary Antibodies                                                                                                                                                                                                                                                                                                                                                                                                                                                                                                                                                                   |
| Applications:         | WB                                                                                                                                                                                                                                                                                                                                                                                                                                                                                                                                                                                   |
| Recommended Dilution: | WB,1:500 - 1:2000                                                                                                                                                                                                                                                                                                                                                                                                                                                                                                                                                                    |
| Reactivity:           | Human, Mouse, Rat                                                                                                                                                                                                                                                                                                                                                                                                                                                                                                                                                                    |
| Host:                 | Rabbit                                                                                                                                                                                                                                                                                                                                                                                                                                                                                                                                                                               |
| Isotype:              | IgG                                                                                                                                                                                                                                                                                                                                                                                                                                                                                                                                                                                  |
| Clonality:            | Polyclonal                                                                                                                                                                                                                                                                                                                                                                                                                                                                                                                                                                           |
| Immunogen:            | Recombinant protein of human PPP2R1A/PPP2R2A/PPP2R1B.                                                                                                                                                                                                                                                                                                                                                                                                                                                                                                                                |
| Formulation:          | Buffer: PBS with 0.02% sodium azide,50% glycerol,pH7.3.                                                                                                                                                                                                                                                                                                                                                                                                                                                                                                                              |
| Concentration:        | lot specific                                                                                                                                                                                                                                                                                                                                                                                                                                                                                                                                                                         |
| Purification:         | Affinity purification                                                                                                                                                                                                                                                                                                                                                                                                                                                                                                                                                                |
| Conjugation:          | Unconjugated                                                                                                                                                                                                                                                                                                                                                                                                                                                                                                                                                                         |
| Storage:              | Store at -20°C. Avoid freeze / thaw cycles.                                                                                                                                                                                                                                                                                                                                                                                                                                                                                                                                          |
| Stability:            | Shelf life: one year from despatch.                                                                                                                                                                                                                                                                                                                                                                                                                                                                                                                                                  |
| Gene Name:            | protein phosphatase 2 scaffold subunit Aalpha                                                                                                                                                                                                                                                                                                                                                                                                                                                                                                                                        |
| Database Link:        | <a href="#">Entrez Gene 5518 Human P30153</a>                                                                                                                                                                                                                                                                                                                                                                                                                                                                                                                                        |
| Background:           | Protein phosphatase 2 is one of the four major Ser/Thr phosphatases, and it is implicated in the negative control of cell growth and division. It consists of a common heteromeric core enzyme, which is composed of a catalytic subunit and a constant regulatory subunit, that associates with a variety of regulatory subunits. The constant regulatory subunit A serves as a scaffolding molecule to coordinate the assembly of the catalytic subunit and a variable regulatory B subunit. The B regulatory subunit might modulate substrate selectivity and catalytic activity. |
| Synonyms:             | MGC786; PR65A                                                                                                                                                                                                                                                                                                                                                                                                                                                                                                                                                                        |



[View online »](#)

## Product images:



Western blot analysis of extracts of various cell lines, using PPP2R1A/PPP2R2A/PPP2R1B antibody (TA380256) at 1:1000 dilution. | Secondary antibody: HRP Goat Anti-Rabbit IgG (H+L) at 1:10000 dilution. | Lysates/proteins: 25ug per lane. | Blocking buffer: 3% nonfat dry milk in TBST. | Detection: ECL Basic Kit. | Exposure time: 10s.