

## Product datasheet for **TA380254**

### PP2A-alpha (PPP2CA) Rabbit Polyclonal Antibody

#### Product data:

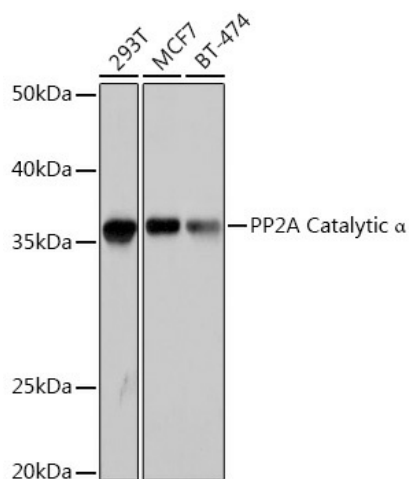
Product Type:	Primary Antibodies
Applications:	ICC/IF, IP, WB
Recommended Dilution:	WB,1:500 - 1:2000 IF,1:50 - 1:200 IP,1:50 - 1:200
Reactivity:	Human, Mouse, Rat
Modifications:	Unmodified
Host:	Rabbit
Isotype:	IgG
Clonality:	Polyclonal
Immunogen:	Recombinant fusion protein containing a sequence corresponding to amino acids 1-309 of human PP2A Catalytic $\alpha$ (NP_002706.1).
Formulation:	Buffer: PBS with 0.02% sodium azide,50% glycerol,pH7.3.
Concentration:	lot specific
Purification:	Affinity purification
Conjugation:	Unconjugated
Storage:	Store at -20°C. Avoid freeze / thaw cycles.
Stability:	Shelf life: one year from despatch.
Predicted Protein Size:	29kDa/35kDa
Gene Name:	protein phosphatase 2 catalytic subunit alpha
Database Link:	<a href="#">Entrez Gene 5515 Human P67775</a>
Background:	This gene encodes the phosphatase 2A catalytic subunit. Protein phosphatase 2A is one of the four major Ser/Thr phosphatases, and it is implicated in the negative control of cell growth and division. It consists of a common heteromeric core enzyme, which is composed of a catalytic subunit and a constant regulatory subunit, that associates with a variety of regulatory subunits. This gene encodes an alpha isoform of the catalytic subunit.



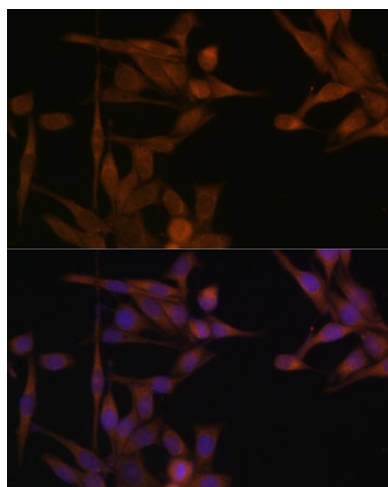
[View online »](#)

Synonyms: PP2A-alpha; PP2Ac; PP2CA; PP2Calpha; RP-C

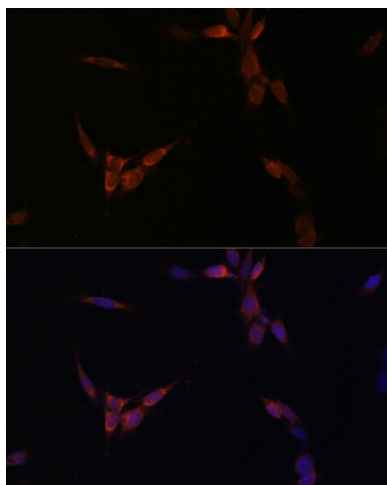
### Product images:



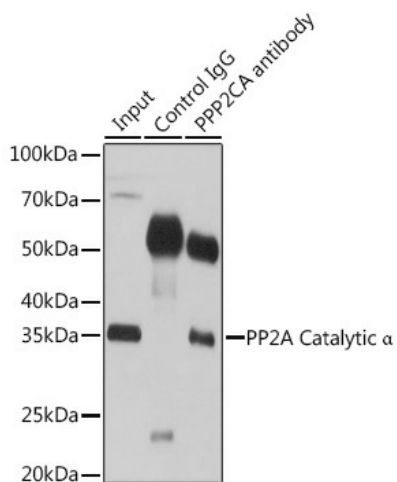
Western blot analysis of extracts of various cell lines, using PP2A Catalytic  $\alpha$  Rabbit pAb (TA380254) at 1:1000 dilution. | Secondary antibody: HRP Goat Anti-Rabbit IgG (H+L) at 1:10000 dilution. | Lysates/proteins: 25ug per lane. | Blocking buffer: 3% nonfat dry milk in TBST. | Detection: ECL Basic Kit. | Exposure time: 1s.



Immunofluorescence analysis of HeLa cells using PP2A Catalytic  $\alpha$  antibody (TA380254) at dilution of 1:100. Blue: DAPI for nuclear staining.



Immunofluorescence analysis of NIH/3T3 cells using PP2A Catalytic  $\alpha$  antibody (TA380254) at dilution of 1:100. Blue: DAPI for nuclear staining.



Immunoprecipitation analysis of 200ug extracts of 293T cells using 3ug PP2A Catalytic  $\alpha$  antibody (TA380254). Western blot was performed from the immunoprecipitate using PP2A Catalytic  $\alpha$  antibody (TA380254) at a dilution of 1:1000.