

Product datasheet for **TA380253**

PPP1R9B Rabbit Polyclonal Antibody

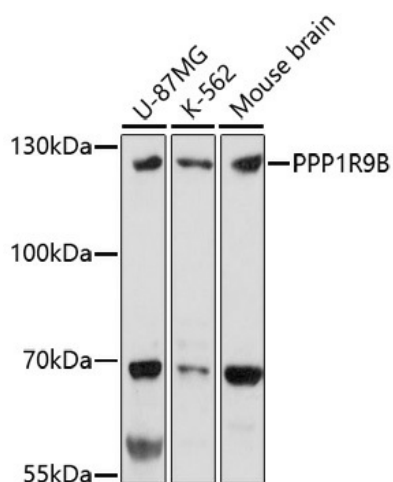
Product data:

Product Type:	Primary Antibodies
Applications:	ICC/IF, WB
Recommended Dilution:	WB,1:500 - 1:2000 IF,1:50 - 1:200
Reactivity:	Human, Mouse
Host:	Rabbit
Isotype:	IgG
Clonality:	Polyclonal
Immunogen:	A synthetic peptide of human PPP1R9B.
Formulation:	Buffer: PBS with 0.02% sodium azide,50% glycerol,pH7.3.
Concentration:	lot specific
Purification:	Affinity purification
Conjugation:	Unconjugated
Storage:	Store at -20°C. Avoid freeze / thaw cycles.
Stability:	Shelf life: one year from despatch.
Predicted Protein Size:	89kDa
Gene Name:	protein phosphatase 1 regulatory subunit 9B
Database Link:	Entrez Gene 84687 Human Q96SB3
Background:	This gene encodes a scaffold protein that functions as a regulatory subunit of protein phosphatase 1a. Expression of this gene is particularly high in dendritic spines, suggesting that the encoded protein may play a role in receiving signals from the central nervous system. The encoded protein has putative tumor suppressor function and decreased expression has been observed in tumors.
Synonyms:	FLJ30345; Neurabin-2; Neurabin-II; PPP1R6; PPP1R9; SPINO; spinophilin; Spn

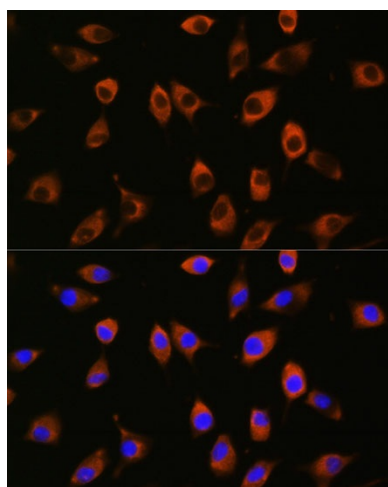


[View online »](#)

Product images:



Western blot analysis of extracts of various cell lines, using PPP1R9B antibody (TA380253) at 1:1000 dilution. | Secondary antibody: HRP Goat Anti-Rabbit IgG (H+L) at 1:10000 dilution. | Lysates/proteins: 25ug per lane. | Blocking buffer: 3% nonfat dry milk in TBST. | Detection: ECL Basic Kit. | Exposure time: 3min.



Immunofluorescence analysis of L929 cells using PPP1R9B antibody (TA380253) at dilution of 1:100. Blue: DAPI for nuclear staining.