

Product datasheet for **TA380245**

GADD34 (PPP1R15A) Rabbit Polyclonal Antibody

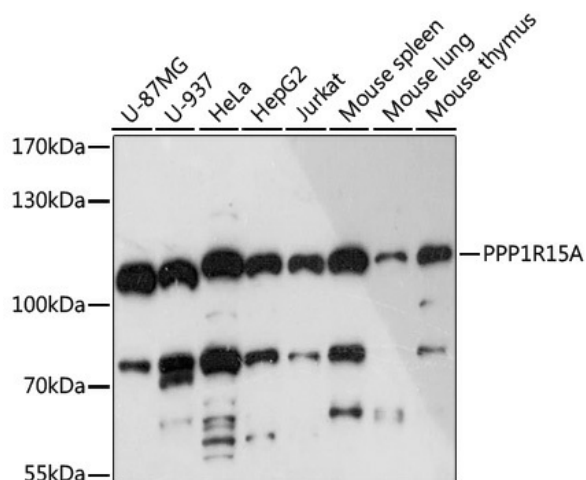
Product data:

Product Type:	Primary Antibodies
Applications:	ICC/IF, WB
Recommended Dilution:	WB, 1:500 - 1:2000 IF, 1:50 - 1:200
Reactivity:	Human, Mouse, Rat
Host:	Rabbit
Isotype:	IgG
Clonality:	Polyclonal
Immunogen:	Recombinant fusion protein containing a sequence corresponding to amino acids 375-674 of human PPP1R15A (NP_055145.3).
Formulation:	Buffer: PBS with 0.02% sodium azide, 50% glycerol, pH 7.3.
Concentration:	lot specific
Purification:	Affinity purification
Conjugation:	Unconjugated
Storage:	Store at -20°C. Avoid freeze / thaw cycles.
Stability:	Shelf life: one year from despatch.
Predicted Protein Size:	49kDa/50kDa 56kDa/73kDa
Gene Name:	protein phosphatase 1 regulatory subunit 15A
Database Link:	Entrez Gene 23645 Human O75807
Background:	This gene is a member of a group of genes whose transcript levels are increased following stressful growth arrest conditions and treatment with DNA-damaging agents. The induction of this gene by ionizing radiation occurs in certain cell lines regardless of p53 status, and its protein response is correlated with apoptosis following ionizing radiation.
Synonyms:	GADD34

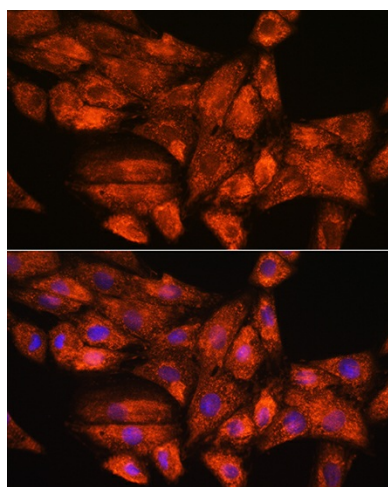


[View online »](#)

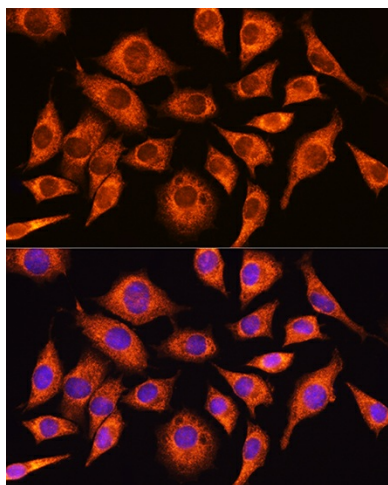
Product images:



Western blot analysis of extracts of various cell lines, using PPP1R15A antibody (TA380245) at 1:3000 dilution. | Secondary antibody: HRP Goat Anti-Rabbit IgG (H+L) at 1:10000 dilution. | Lysates/proteins: 25ug per lane. | Blocking buffer: 3% nonfat dry milk in TBST. | Detection: ECL Basic Kit. | Exposure time: 90s.



Immunofluorescence analysis of H9C2 cells using PPP1R15A Rabbit pAb (TA380245) at dilution of 1:100. Blue: DAPI for nuclear staining.



Immunofluorescence analysis of L929 cells using PPP1R15A Rabbit pAb (TA380245) at dilution of 1:100. Blue: DAPI for nuclear staining.