

Product datasheet for **TA380244S**

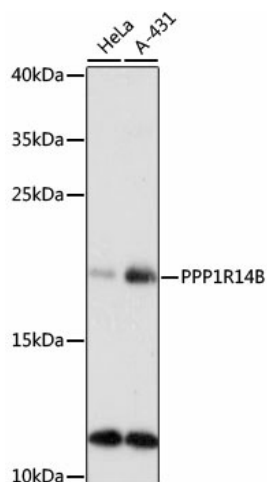
PPP1R14B Rabbit Polyclonal Antibody

Product data:

Product Type:	Primary Antibodies
Applications:	ELISA, WB
Recommended Dilution:	WB, 1:500 - 1:2000 ELISA, Recommended starting concentration is 1 µg/mL. Please optimize the concentration based on your specific assay requirements.
Reactivity:	Human, Mouse, Rat
Modifications:	Unmodified
Host:	Rabbit
Isotype:	IgG
Clonality:	Polyclonal
Formulation:	Buffer: PBS with 0.02% sodium azide, 50% glycerol, pH 7.3.
Concentration:	lot specific
Purification:	Affinity purification
Conjugation:	Unconjugated
Storage:	Store at -20°C. Avoid freeze / thaw cycles.
Stability:	Shelf life: one year from despatch.
Predicted Protein Size:	16kDa
Gene Name:	protein phosphatase 1 regulatory inhibitor subunit 14B
Database Link:	Entrez Gene 26472 Human Q96C90
Background:	Predicted to enable protein serine/threonine phosphatase inhibitor activity. Predicted to be involved in innate immune response. Predicted to be located in cytoplasm.
Synonyms:	PHI-1; PLCB3N; PNG; SOM172



[View online »](#)

Product images:


Western blot analysis of various lysates using PPP1R14B Rabbit pAb ([TA380244]) at 1:1000 dilution.

Secondary antibody: HRP-conjugated Goat anti-Rabbit IgG (H+L) (AS014) at 1:10000 dilution.

Lysates/proteins: 25µg per lane.

Blocking buffer: 3% nonfat dry milk in TBST.

Detection: ECL Basic Kit (RM00020).

Exposure time: 90s.