

## Product datasheet for **TA380244**

### PPP1R14B Rabbit Polyclonal Antibody

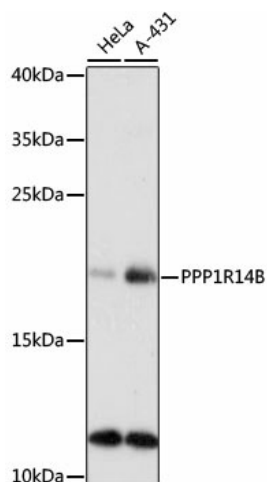
#### Product data:

Product Type:	Primary Antibodies
Applications:	WB
Recommended Dilution:	WB,1:500 - 1:2000 IF,1:50 - 1:100
Reactivity:	Human, Mouse, Rat
Modifications:	Unmodified
Host:	Rabbit
Isotype:	IgG
Clonality:	Polyclonal
Immunogen:	Recombinant fusion protein containing a sequence corresponding to amino acids 68-147 of human PPP1R14B (NP_619634.1).
Formulation:	Buffer: PBS with 0.02% sodium azide,50% glycerol,pH7.3.
Concentration:	lot specific
Purification:	Affinity purification
Conjugation:	Unconjugated
Storage:	Store at -20°C. Avoid freeze / thaw cycles.
Stability:	Shelf life: one year from despatch.
Predicted Protein Size:	16kDa
Gene Name:	protein phosphatase 1 regulatory inhibitor subunit 14B
Database Link:	<a href="#">Entrez Gene 26472 Human Q96C90</a>
Background:	Inhibitor of PPP1CA. Has over 50-fold higher inhibitory activity when phosphorylated (By similarity).
Synonyms:	PHI-1; PLCB3N; PNG; SOM172



[View online »](#)

## Product images:



Western blot analysis of extracts of various cell lines, using PPP1R14B antibody (TA380244) at 1:1000 dilution. | Secondary antibody: HRP Goat Anti-Rabbit IgG (H+L) at 1:10000 dilution. | Lysates/proteins: 25ug per lane. | Blocking buffer: 3% nonfat dry milk in TBST. | Detection: ECL Basic Kit . | Exposure time: 90s.