

Product datasheet for **TA380230**

PPP1A (PPP1CA) Rabbit Polyclonal Antibody

Product data:

Product Type:	Primary Antibodies
Applications:	IHC, WB
Recommended Dilution:	WB,1:500 - 1:2000 IHC,1:50 - 1:100
Reactivity:	Human, Mouse, Rat
Modifications:	Phospho T320
Host:	Rabbit
Isotype:	IgG
Clonality:	Polyclonal
Immunogen:	A phospho specific peptide corresponding to residues surrounding T320 of human PPP1CA
Formulation:	Buffer: PBS with 0.02% sodium azide,50% glycerol,pH7.3.
Concentration:	lot specific
Purification:	Affinity purification
Conjugation:	Unconjugated
Storage:	Store at -20°C. Avoid freeze / thaw cycles.
Stability:	Shelf life: one year from despatch.
Predicted Protein Size:	32kDa/37kDa/38kDa
Gene Name:	protein phosphatase 1 catalytic subunit alpha
Database Link:	Entrez Gene 5499 Human P62136

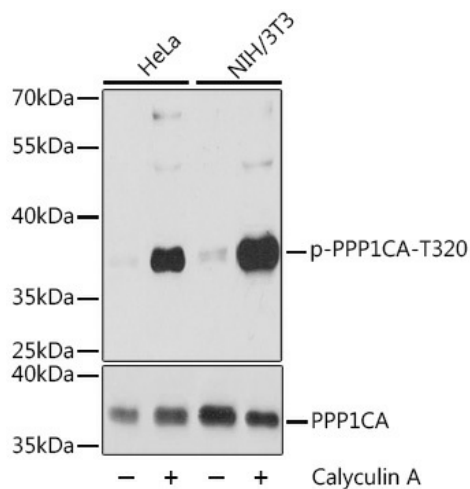
Background: The protein encoded by this gene is one of the three catalytic subunits of protein phosphatase 1 (PP1). PP1 is a serine/threonine specific protein phosphatase known to be involved in the regulation of a variety of cellular processes, such as cell division, glycogen metabolism, muscle contractility, protein synthesis, and HIV-1 viral transcription. Increased PP1 activity has been observed in the end stage of heart failure. Studies in both human and mice suggest that PP1 is an important regulator of cardiac function. Mouse studies also suggest that PP1 functions as a suppressor of learning and memory. Three alternatively spliced transcript variants encoding different isoforms have been found for this gene.



[View online »](#)

Synonyms: MGC1674; MGC15877; PP-1A; PP1A; PPP1A

Product images:



Western blot analysis of extracts of various cell lines, using Phospho-PPP1CA-T320 antibody (TA380230) at 1:2000 dilution or PPP1CA antibody (A12468). NIH/3T3 cells were treated by Calyculin A (100 nM) at 37°C for 30 minutes after serum-starvation overnight. | Secondary antibody: HRP Goat Anti-Rabbit IgG (H+L) at 1:10000 dilution. | Lysates/proteins: 25ug per lane. | Blocking buffer: 3% BSA. | Detection: ECL Basic Kit . | Exposure time: 30s.