

Product datasheet for TA380225S

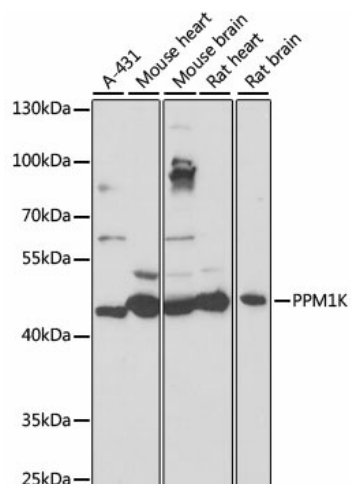
PPM1K Rabbit Polyclonal Antibody

Product data:

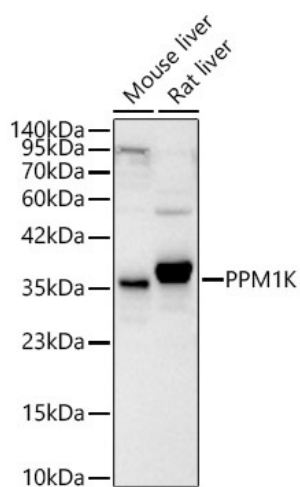
Product Type:	Primary Antibodies
Applications:	ELISA, WB
Recommended Dilution:	WB, 1:500 - 1:2000 ELISA, Recommended starting concentration is 1 µg/mL. Please optimize the concentration based on your specific assay requirements.
Reactivity:	Human, Mouse, Rat
Modifications:	Unmodified
Host:	Rabbit
Isotype:	IgG
Clonality:	Polyclonal
Formulation:	PBS with 0.05% proclin300, 50% glycerol, pH7.3.
Concentration:	lot specific
Purification:	Affinity purification
Conjugation:	Unconjugated
Storage:	Store at -20°C. Avoid freeze / thaw cycles.
Stability:	Shelf life: one year from despatch.
Predicted Protein Size:	41kDa
Gene Name:	protein phosphatase, Mg ²⁺ /Mn ²⁺ dependent 1K
Database Link:	Entrez Gene 152926 Human Q8N3J5
Background:	This gene encodes a member of the PPM family of Mn ²⁺ /Mg ²⁺ -dependent protein phosphatases. The encoded protein, essential for cell survival and development, is targeted to the mitochondria where it plays a key role in regulation of the mitochondrial permeability transition pore.
Synonyms:	DKFZp667B084; DKFZp761G058; hPTMP; PP2C-kappa; PP2Ckappa; PP2Cm; PTMP; UG0882E07


[View online »](#)

Product images:



Western blot analysis of various lysates



Western blot analysis of various lysates