

Product datasheet for **TA380225**

PPM1K Rabbit Polyclonal Antibody

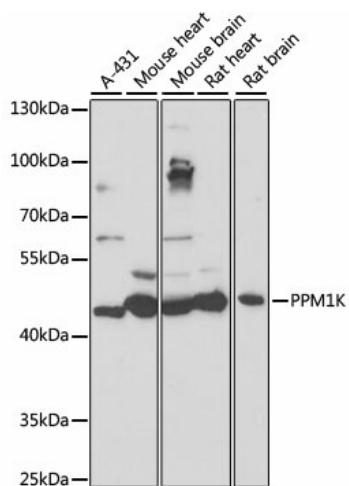
Product data:

Product Type:	Primary Antibodies
Applications:	WB
Recommended Dilution:	WB,1:500 - 1:2000
Reactivity:	Human, Mouse, Rat
Modifications:	Unmodified
Host:	Rabbit
Isotype:	IgG
Clonality:	Polyclonal
Immunogen:	Recombinant fusion protein containing a sequence corresponding to amino acids 183-372 of human PPM1K (NP_689755.3).
Formulation:	PBS with 0.05% proclin300,50% glycerol,pH7.3.
Concentration:	lot specific
Purification:	Affinity purification
Conjugation:	Unconjugated
Storage:	Store at -20°C. Avoid freeze / thaw cycles.
Stability:	Shelf life: one year from despatch.
Predicted Protein Size:	16kDa/25kDa/40kDa
Gene Name:	protein phosphatase, Mg ²⁺ /Mn ²⁺ dependent 1K
Database Link:	Entrez Gene 152926 Human Q8N3J5
Background:	This gene encodes a member of the PPM family of Mn ²⁺ /Mg ²⁺ -dependent protein phosphatases. The encoded protein, essential for cell survival and development, is targeted to the mitochondria where it plays a key role in regulation of the mitochondrial permeability transition pore.
Synonyms:	DKFZp667B084; DKFZp761G058; hPTMP; PP2C-kappa; PP2Ckappa; PP2Cm; PTMP; UG0882E07



[View online »](#)

Product images:



Western blot analysis of extracts of various cell lines, using PPM1K antibody (TA380225) at 1:1000 dilution. | Secondary antibody: HRP Goat Anti-Rabbit IgG (H+L) at 1:10000 dilution. | Lysates/proteins: 25ug per lane. | Blocking buffer: 3% nonfat dry milk in TBST. | Detection: ECL Basic Kit. | Exposure time: 1s.