

Product datasheet for **TA380224**

PPM1J Rabbit Polyclonal Antibody

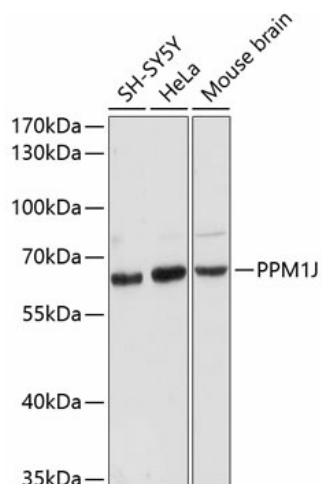
Product data:

Product Type:	Primary Antibodies
Applications:	WB
Recommended Dilution:	WB,1:500 - 1:2000
Reactivity:	Human, Mouse
Modifications:	Unmodified
Host:	Rabbit
Isotype:	IgG
Clonality:	Polyclonal
Immunogen:	Recombinant fusion protein containing a sequence corresponding to amino acids 130-260 of human PPM1J (NP_005158.5).
Formulation:	Buffer: PBS with 0.02% sodium azide,50% glycerol,pH7.3.
Concentration:	lot specific
Purification:	Affinity purification
Conjugation:	Unconjugated
Storage:	Store at -20°C. Avoid freeze / thaw cycles.
Stability:	Shelf life: one year from despatch.
Predicted Protein Size:	33kDa/54kDa
Gene Name:	protein phosphatase, Mg ²⁺ /Mn ²⁺ dependent 1J
Database Link:	Entrez Gene 333926 Human Q5JR12
Background:	This gene encodes the serine/threonine protein phosphatase. The mouse homolog of this gene apparently belongs to the protein phosphatase 2C family of genes. The exact function of this gene is not yet known.
Synonyms:	DKFZp434P1514; FLJ35951; MGC19531; MGC90149; PP2C-zeta; PP2CZ; PP2Czeta; PPP2CZ



[View online »](#)

Product images:



Western blot analysis of extracts of various cell lines, using PPM1J antibody (TA380224) at 1:3000 dilution. | Secondary antibody: HRP Goat Anti-Rabbit IgG (H+L) at 1:10000 dilution. | Lysates/proteins: 25ug per lane. | Blocking buffer: 3% nonfat dry milk in TBST. | Detection: ECL Basic Kit . | Exposure time: 90s.