

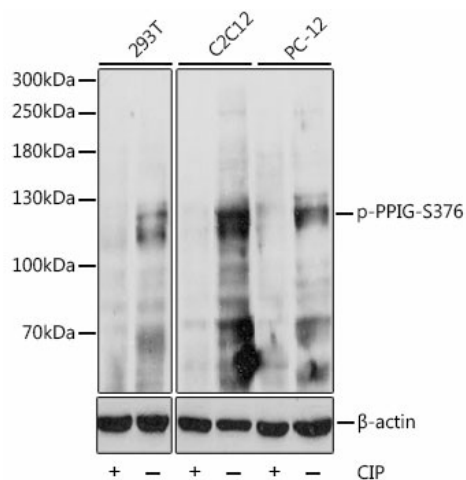
Product datasheet for TA380214S

PPiG Rabbit Polyclonal Antibody

Product data:

Product Type:	Primary Antibodies
Applications:	ELISA, WB
Recommended Dilution:	WB, 1:500 - 1:2000 ELISA, Recommended starting concentration is 1 µg/mL. Please optimize the concentration based on your specific assay requirements.
Reactivity:	Human, Mouse, Rat
Modifications:	Phospho S376
Host:	Rabbit
Isotype:	IgG
Clonality:	Polyclonal
Formulation:	Buffer: PBS with 0.02% sodium azide, 50% glycerol, pH 7.3.
Concentration:	lot specific
Purification:	Affinity purification
Conjugation:	Unconjugated
Storage:	Store at -20°C. Avoid freeze / thaw cycles.
Stability:	Shelf life: one year from despatch.
Predicted Protein Size:	89kDa
Gene Name:	peptidylprolyl isomerase G
Database Link:	Entrez Gene 9360 Human Q13427
Background:	Enables cyclosporin A binding activity and peptidyl-prolyl cis-trans isomerase activity. Involved in protein peptidyl-prolyl isomerization. Located in cytosol and nuclear speck.
Synonyms:	CARS-cyclophilin; CARS-Cyp; CASP10; CYP; MGC133241; SR-cyclophilin; SR-cyp; SRCyp


[View online »](#)

Product images:


Western blot analysis of various lysates using Phospho-PPIG-S376 Rabbit pAb ([TA380214]) at 1:1000 dilution. 293T cell lysate were treated by CIP (20ul CIP for each 400ul cell lysate) at 37°C for 1 hour. C2C12 cell lysate were treated by CIP (20ul CIP for each 400ul cell lysate) at 37°C for 1 hour. PC-12 cell lysate were treated by CIP (20ul CIP for each 400ul cell lysate) at 37°C for 1 hour. Secondary antibody: HRP-conjugated Goat anti-Rabbit IgG (H+L) at 1:10000 dilution. Lysates/proteins: 25µg per lane. Blocking buffer: 3% BSA. Detection: ECL Basic Kit. Exposure time: 90s.