

Product datasheet for **TA380214**

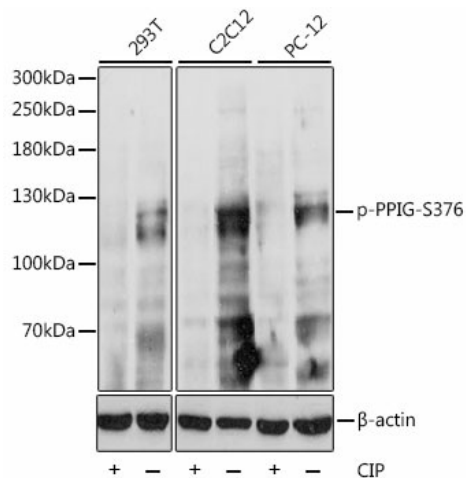
PPIG Rabbit Polyclonal Antibody

Product data:

Product Type:	Primary Antibodies
Applications:	WB
Recommended Dilution:	WB,1:500 - 1:2000
Reactivity:	Human, Mouse, Rat
Modifications:	Phospho S376
Host:	Rabbit
Isotype:	IgG
Clonality:	Polyclonal
Immunogen:	A synthetic phosphorylated peptide around S376 of human PPIG (NP_004783.2).
Formulation:	Buffer: PBS with 0.02% sodium azide,50% glycerol,pH7.3.
Concentration:	lot specific
Purification:	Affinity purification
Conjugation:	Unconjugated
Storage:	Store at -20°C. Avoid freeze / thaw cycles.
Stability:	Shelf life: one year from despatch.
Predicted Protein Size:	40kDa/88kDa
Gene Name:	peptidylprolyl isomerase G
Database Link:	Entrez Gene 9360 Human Q13427
Background:	PPIase that catalyzes the cis-trans isomerization of proline imidic peptide bonds in oligopeptides and may therefore assist protein folding (PubMed:20676357). May be implicated in the folding, transport, and assembly of proteins. May play an important role in the regulation of pre-mRNA splicing.
Synonyms:	CARS-cyclophilin; CARS-Cyp; CASP10; CYP; MGC133241; SR-cyclophilin; SR-cyp; SRCyp



[View online »](#)

Product images:


Western blot analysis of extracts of various cell lines, using Phospho-PPIG-S376 antibody (TA380214) at 1:1000 dilution. 293T cell lysate were treated by CIP (20ul CIP for each 400ul cell lysate) at 37°C for 1 hour. C2C12 cell lysate were treated by CIP (20ul CIP for each 400ul cell lysate) at 37°C for 1 hour. PC-12 cell lysate were treated by CIP (20ul CIP for each 400ul cell lysate) at 37°C for 1 hour. |Secondary antibody: HRP Goat Anti-Rabbit IgG (H+L) at 1:10000 dilution. |Lysates/proteins: 25ug per lane. |Blocking buffer: 3% BSA. |Detection: ECL Basic Kit . |Exposure time: 90s.