

## Product datasheet for **TA380197**

### PGC1 alpha (PPARGC1A) Rabbit Polyclonal Antibody

#### Product data:

Product Type:	Primary Antibodies
Applications:	ICC/IF, IHC, WB
Recommended Dilution:	WB,1:500 - 1:2000 IHC,1:50 - 1:200 IF,1:50 - 1:200
Reactivity:	Human, Mouse, Rat
Modifications:	Unmodified
Host:	Rabbit
Isotype:	IgG
Clonality:	Polyclonal
Immunogen:	A synthetic peptide corresponding to a sequence within amino acids 700 to the C-terminus of human PGC1 $\alpha$ (NP_037393.1).
Formulation:	Buffer: PBS with 0.02% sodium azide,50% glycerol,pH7.3.
Concentration:	lot specific
Purification:	Affinity purification
Conjugation:	Unconjugated
Storage:	Store at -20°C. Avoid freeze / thaw cycles.
Stability:	Shelf life: one year from despatch.
Predicted Protein Size:	14kDa/30kDa/31kDa/33kDa/77kDa/89kDa/91kDa
Gene Name:	PPARG coactivator 1 alpha
Database Link:	<a href="#">Entrez Gene 10891 Human Q9UBK2</a>



[View online »](#)

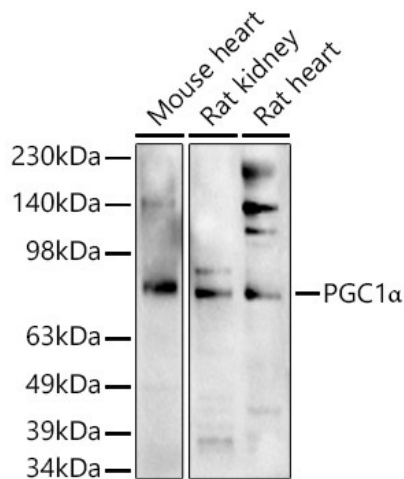
**Background:**

The protein encoded by this gene is a transcriptional coactivator that regulates the genes involved in energy metabolism. This protein interacts with PPARgamma, which permits the interaction of this protein with multiple transcription factors. This protein can interact with, and regulate the activities of, cAMP response element binding protein (CREB) and nuclear respiratory factors (NRFs). It provides a direct link between external physiological stimuli and the regulation of mitochondrial biogenesis, and is a major factor that regulates muscle fiber type determination. This protein may be also involved in controlling blood pressure, regulating cellular cholesterol homeostasis, and the development of obesity.

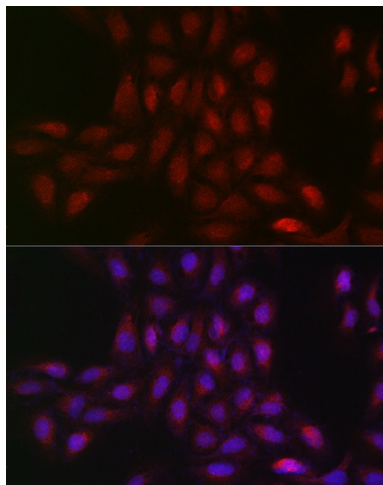
**Synonyms:**

LEM6; PGC-1(alpha); PGC-1-alpha; PGC-1v; PGC1; PGC1A; PPARGC-1-alpha; PPARGC1

**Product images:**



Western blot analysis of extracts of various cell lines, using PGC1 $\alpha$  antibody (TA380197) at 1:1000 dilution. | Secondary antibody: HRP Goat Anti-Rabbit IgG (H+L) at 1:10000 dilution. | Lysates/proteins: 25ug per lane. | Blocking buffer: 3% nonfat dry milk in TBST. | Detection: ECL Enhanced Kit. | Exposure time: 90s.



Immunofluorescence analysis of U2OS cells using PGC1 $\alpha$  Rabbit pAb (TA380197) at dilution of 1:50 (40x lens). Blue: DAPI for nuclear staining.