

Product datasheet for **TA380178S**

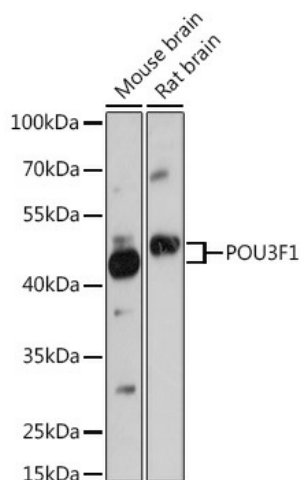
Oct6 (POU3F1) Rabbit Polyclonal Antibody

Product data:

Product Type:	Primary Antibodies
Applications:	ELISA, WB
Recommended Dilution:	WB, 1:500 - 1:2000 ELISA, Recommended starting concentration is 1 µg/mL. Please optimize the concentration based on your specific assay requirements.
Reactivity:	Mouse, Rat
Host:	Rabbit
Isotype:	IgG
Clonality:	Polyclonal
Formulation:	Buffer: PBS with 0.02% sodium azide, 50% glycerol, pH 7.3.
Concentration:	lot specific
Purification:	Affinity purification
Conjugation:	Unconjugated
Storage:	Store at -20°C. Avoid freeze / thaw cycles.
Stability:	Shelf life: one year from despatch.
Predicted Protein Size:	45kDa
Gene Name:	POU class 3 homeobox 1
Database Link:	Q03052
Background:	Enables sequence-specific double-stranded DNA binding activity. Predicted to be involved in negative regulation of transcription by RNA polymerase II; positive regulation of gene expression; and positive regulation of transcription, DNA-templated. Predicted to act upstream of or within keratinocyte differentiation; nervous system development; and positive regulation of transcription by RNA polymerase II. Located in nucleoplasm.
Synonyms:	Oct-6; OCT6; OTF6; SCIP

[View online »](#)

Product images:



Western blot analysis of various lysates using POU3F1 Rabbit pAb ([TA380178]) at 1:1000 dilution.

Secondary antibody: HRP-conjugated Goat anti-Rabbit IgG (H+L) (AS014) at 1:10000 dilution.

Lysates/proteins: 25µg per lane.

Blocking buffer: 3% nonfat dry milk in TBST.

Detection: ECL Basic Kit (RM00020).

Exposure time: 90s.