

## Product datasheet for **TA380164**

### POP1 Rabbit Polyclonal Antibody

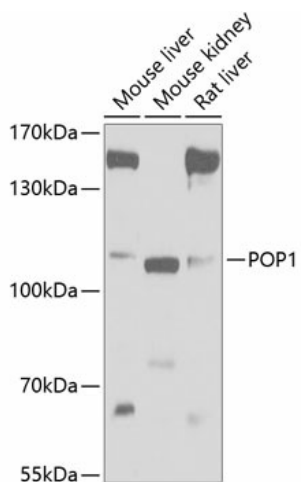
#### Product data:

Product Type:	Primary Antibodies
Applications:	WB
Recommended Dilution:	WB,1:200 - 1:2000
Reactivity:	Mouse, Rat
Modifications:	Unmodified
Host:	Rabbit
Isotype:	IgG
Clonality:	Polyclonal
Immunogen:	Recombinant fusion protein containing a sequence corresponding to amino acids 1-210 of human POP1 (NP_055844.2).
Formulation:	Buffer: PBS with 0.02% sodium azide,50% glycerol,pH7.3.
Concentration:	lot specific
Purification:	Affinity purification
Conjugation:	Unconjugated
Storage:	Store at -20°C. Avoid freeze / thaw cycles.
Stability:	Shelf life: one year from despatch.
Predicted Protein Size:	114kDa
Gene Name:	POP1 homolog, ribonuclease P/MRP subunit
Database Link:	<a href="#">Q99575</a>
Background:	This gene encodes the protein subunit of two different small nucleolar ribonucleoprotein complexes: the endoribonuclease for mitochondrial RNA processing complex and the ribonuclease P complex. The encoded protein is a ribonuclease that localizes to the nucleus and functions in pre-RNA processing. This protein is also an autoantigen in patients suffering from connective tissue diseases. Alternative splicing results in multiple transcript variants.
Synonyms:	hPOP1; KIAA0061; MGC17365



[View online »](#)

## Product images:



Western blot analysis of extracts of various cell lines, using POP1 antibody (TA380164) at 1:1000 dilution. | Secondary antibody: HRP Goat Anti-Rabbit IgG (H+L) at 1:10000 dilution. | Lysates/proteins: 25ug per lane. | Blocking buffer: 3% nonfat dry milk in TBST. | Detection: ECL Basic Kit . | Exposure time: 5s.