

## Product datasheet for **TA380145**

### **POLR2H Rabbit Polyclonal Antibody**

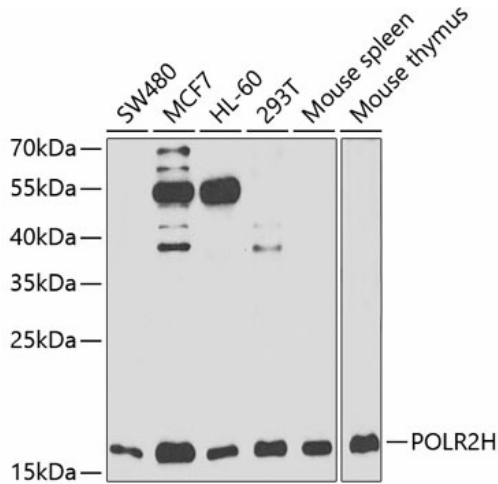
#### **Product data:**

<b>Product Type:</b>	Primary Antibodies
<b>Applications:</b>	IP, WB
<b>Recommended Dilution:</b>	WB, 1:500 - 1:2000 IP, 1:50 - 1:200
<b>Reactivity:</b>	Human, Mouse
<b>Modifications:</b>	Unmodified
<b>Host:</b>	Rabbit
<b>Isotype:</b>	IgG
<b>Clonality:</b>	Polyclonal
<b>Immunogen:</b>	Recombinant fusion protein containing a sequence corresponding to amino acids 1-150 of human POLR2H (NP_006223.2).
<b>Formulation:</b>	Buffer: PBS with 0.02% sodium azide, 50% glycerol, pH 7.3.
<b>Concentration:</b>	lot specific
<b>Purification:</b>	Affinity purification
<b>Conjugation:</b>	Unconjugated
<b>Storage:</b>	Store at -20°C. Avoid freeze / thaw cycles.
<b>Stability:</b>	Shelf life: one year from despatch.
<b>Predicted Protein Size:</b>	9kDa/12kDa/13kDa/17kDa/19kDa
<b>Gene Name:</b>	polymerase (RNA) II subunit H
<b>Database Link:</b>	<a href="#">Entrez Gene 5437 Human P52434</a>
<b>Background:</b>	The three eukaryotic RNA polymerases are complex multisubunit enzymes that play a central role in the transcription of nuclear genes. This gene encodes an essential and highly conserved subunit of RNA polymerase II that is shared by the other two eukaryotic DNA-directed RNA polymerases, I and III. Alternative splicing results in multiple transcript variants of this gene.
<b>Synonyms:</b>	hRPB8; hsRPB8; OTTHUMP00000210505; RPABC3; RPB8; RPB17

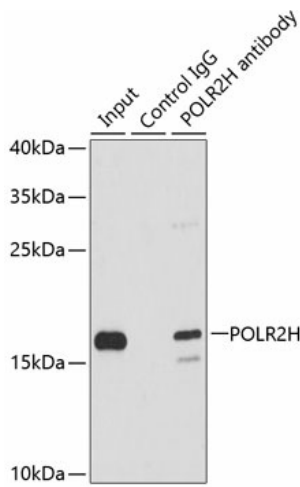


[View online »](#)

**Product images:**



Western blot analysis of extracts of various cell lines, using POLR2H antibody (TA380145) at 1:1000 dilution. | Secondary antibody: HRP Goat Anti-Rabbit IgG (H+L) at 1:10000 dilution. | Lysates/proteins: 25ug per lane. | Blocking buffer: 3% nonfat dry milk in TBST. | Detection: ECL Basic Kit . | Exposure time: 30s.



Immunoprecipitation analysis of 200ug extracts of MCF7 cells using 1ug POLR2H antibody (TA380145). Western blot was performed from the immunoprecipitate using POLR2H antibody (TA380145) at a dilution of 1:1000.