

Product datasheet for **TA380138S**

POLR2A Rabbit Polyclonal Antibody

Product data:

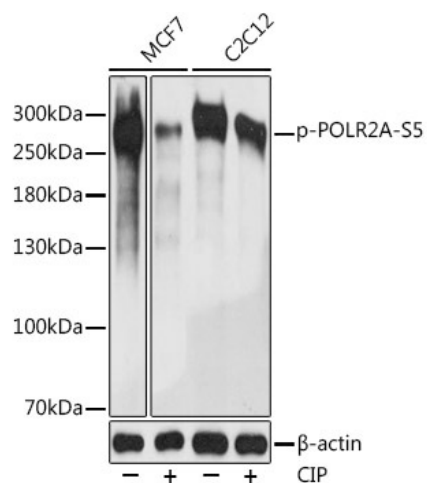
| | |
|-------------------------|--|
| Product Type: | Primary Antibodies |
| Applications: | IHC, WB |
| Recommended Dilution: | WB,1:500 - 1:2000 IHC,1:50 - 1:100 |
| Reactivity: | Human, Mouse, Rat |
| Modifications: | Phospho S5 |
| Host: | Rabbit |
| Isotype: | IgG |
| Clonality: | Polyclonal |
| Immunogen: | A phospho specific peptide corresponding to residues surrounding S5 of human POLR2A |
| Formulation: | PBS with 0.05% proclin300,50% glycerol,pH7.3. |
| Concentration: | lot specific |
| Purification: | Affinity purification |
| Conjugation: | Unconjugated |
| Storage: | Store at -20°C. Avoid freeze / thaw cycles. |
| Stability: | Shelf life: one year from despatch. |
| Predicted Protein Size: | 63kDa/217kDa |
| Gene Name: | polymerase (RNA) II subunit A |
| Database Link: | Entrez Gene 5430 Human P24928 |
| Background: | This gene encodes the largest subunit of RNA polymerase II, the polymerase responsible for synthesizing messenger RNA in eukaryotes. The product of this gene contains a carboxy terminal domain composed of heptapeptide repeats that are essential for polymerase activity. These repeats contain serine and threonine residues that are phosphorylated in actively transcribing RNA polymerase. In addition, this subunit, in combination with several other polymerase subunits, forms the DNA binding domain of the polymerase, a groove in which the DNA template is transcribed into RNA. |



[View online »](#)

Synonyms: hRPB220; hsRPB1; POLR2; POLRA; RPB1; RPBh1; RpiILS; RPO2; RPOL2

Product images:



Western blot analysis of extracts of various cell lines, using Phospho-POLR2A-S5 antibody ([TA380138]) at 1:1000 dilution. MCF7 and C2C12 cells were treated by CIP(20uL/400ul) at 37°C for 1 hour. | Secondary antibody: HRP Goat Anti-Rabbit IgG (H+L) at 1:10000 dilution. | Lysates/proteins: 25ug per lane. | Blocking buffer: 3% nonfat dry milk in TBST. | Detection: ECL Basic Kit. | Exposure time: 1s.