

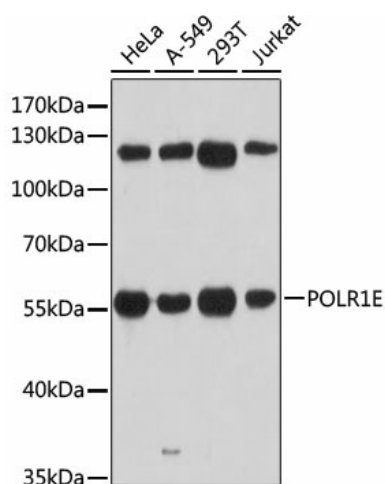
## Product datasheet for TA380135S

### PRAF1 (POLR1E) Rabbit Polyclonal Antibody

#### Product data:

Product Type:	Primary Antibodies
Applications:	ELISA, IP, WB
Recommended Dilution:	WB, 1:500 - 1:2000 IP, 0.5µg-4µg antibody for 200µg-400µg extracts of whole cells ELISA, Recommended starting concentration is 1 µg/mL. Please optimize the concentration based on your specific assay requirements.
Reactivity:	Human, Mouse, Rat
Modifications:	Unmodified
Host:	Rabbit
Isotype:	IgG
Clonality:	Polyclonal
Formulation:	Buffer: PBS with 0.02% sodium azide, 50% glycerol, pH 7.3.
Concentration:	lot specific
Purification:	Affinity purification
Conjugation:	Unconjugated
Storage:	Store at -20°C. Avoid freeze / thaw cycles.
Stability:	Shelf life: one year from despatch.
Predicted Protein Size:	47kDa
Gene Name:	polymerase (RNA) I subunit E
Database Link:	<a href="#">Entrez Gene 64425 Human Q9GZS1</a>
Background:	Predicted to enable DNA binding activity; DNA-directed 5'-3' RNA polymerase activity; and RNA polymerase I general transcription initiation factor binding activity. Involved in nucleolar large rRNA transcription by RNA polymerase I. Located in fibrillar center and nucleoplasm.
Synonyms:	FLJ13390; FLJ13970; PAF53; PRAF1; RP11-405L18.3


[View online »](#)

**Product images:**


Western blot analysis of various lysates using POLR1E Rabbit pAb (TA380135) at 1:3000 dilution.

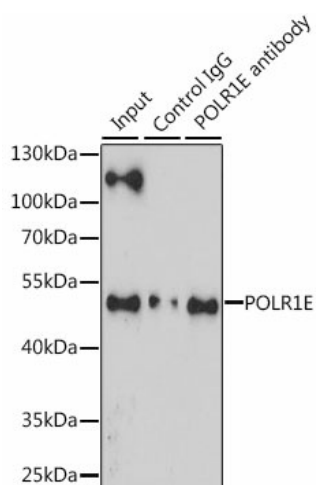
Secondary antibody: HRP-conjugated Goat anti-Rabbit IgG (H+L) (AS014) at 1:10000 dilution.

Lysates/proteins: 25µg per lane.

Blocking buffer: 3% nonfat dry milk in TBST.

Detection: ECL Basic Kit (RM00020).

Exposure time: 30s.



Immunoprecipitation analysis of 200 µg extracts of Jurkat cells